

# OTOLOGICAL

## MIDDLE EAR PROSTHESES

### MIDDLE EAR IMPLANTS

- Tita-prosthesis type Partial Vario Campana (OSSEOUS: PORP)
- Tita-prosthesis type Total Vario Cask (OSSEOUS: TORP)
- PTFE Total Prosthesis (TORP)
- PTFE Partial Prosthesis (PORP)
- TitaHAp-prosthesis type Vario Partial (HAp coated PORP)
- TitaHAp-prosthesis type Vario Total (HAp coated TORP)
- Tita-prosthesis Piston type Loop (OSSEOUS: Titanium Piston)
- Tita-PTFE Vario Piston type Loop (OSSEOUS: Tita-PTFE Piston)
- Super Titanium Vario Piston type Loop (OSSEOUS: Super Titanium Piston)
- Super Tita-PTFE Vario Piston type Loop (OSSEOUS: Super Tita-PTFE Piston)
- Superelastic NITINOL-PTFE Vario Piston type Loop (OSSEOUS: NITINOL-PTFE Piston)
- PTFE Stapes Piston

### INSTRUMENTATIONS FOR MIDDLE EAR IMPLANTS

- OSSEOUS CUTTER
- OSSEOUS SIZER



403, B Tower, Diamond World, Mangadh Chowk,  
Varachha Road, Surat-395006,  
Gujarat, India.

Phone: +91 261 3072190.

E-mail ID: [info@eonmeditech.com](mailto:info@eonmeditech.com)

[sales@eonmeditech.com](mailto:sales@eonmeditech.com)

[www.eonmeditech.com](http://www.eonmeditech.com)



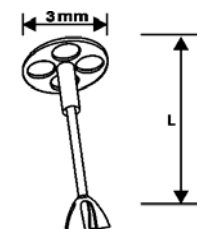
## Tita-prosthesis type Partial Vario Campana (OSSEOUS: PORP)

- Offers best possible length selection.

**Material: CP Titanium Medical Grade 2 (ASTM F67)**

Features:

- Only one **OSSEOUS: PORP** is required as a Partial prosthesis.
- Made up of Excellent Biocompatible Titanium material.
- Four symmetrical holes on Disk for enhanced view capability.
- Faster surgical procedure and enhanced patient safety.
- Stable design provides maximum sound output.
- Radial outer facing of disk minimizes risk of tympanic membrane injury.
- MRI Compatible.



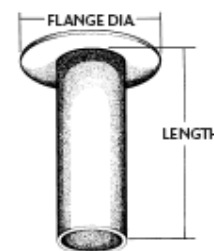
REF Number	Shaft Diameter	Disk Diameter	Functional Length	Total Length (L)	Units per package
E1101	0.30	3.00	1.75-5.00	5.00	1 pc, Gamma Sterile

## PTFE Partial Prosthesis (PORP)

**Material: PTFE (Polytetrafluoroethylene)**

Features:

- Conventional design.
- Can be trimmed from 5.00 mm to 2.00 mm.



REF Number	Shaft Diameter OD/ID	Disk Diameter	Functional Length	Total Length (L)	Units per package
E2133	2.00/1.20 hollow, partially	4.00	5.00 – 2.00	5.00	1 pc, ETO Sterile

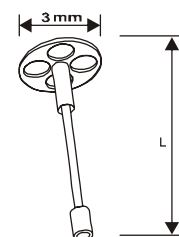
## Tita-prosthesis type Total Vario Cask (OSSEOUS: TORP)

➤ Offers best possible length selection.

**Material: CP Titanium Medical Grade 2 (ASTM F67)**

Features:

- Only one **OSSEOUS: TORP** is required as a Total prosthesis.
- Made up of excellent biocompatible Titanium material.
- Four symmetrical holes on Disk for enhanced view capability.
- Faster surgical procedure and enhanced patient safety.
- Stable design provides maximum sound output.
- Radial outer facing of disk minimizes risk of tympanic membrane injury.
- MRI Compatible.



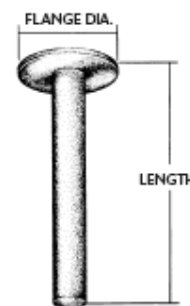
REF Number	Shaft Diameter	Disk Diameter	Functional Length	Total Length (L)	Units per package
E1102	0.30	3.00	3.00-7.00	7.00	1 pc, Gamma Sterile

## PTFE Total Prosthesis (TORP)

**Material: PTFE (Polytetrafluoroethylene)**

Features:

- Conventional design.
- Can be trimmed from 7.00 mm to 3.00 mm.



REF Number	Shaft Diameter	Flange Diameter	Functional Length	Total Length (L)	Units per package
E2134	1.00	3.00	7.00 - 3.00	7.00	1 pc, ETO Sterile

## TitaHAp-prosthesis type Vario Partial (PORP)

## TitaHAp-prosthesis type Vario Total (TORP)

- Provides advantages of both material; Titanium & Hydroxyapatite (HAp)

**Material: CP Titanium Medical Grade 2 (ASTM F67) and Hydroxyapatite**

Specifications:

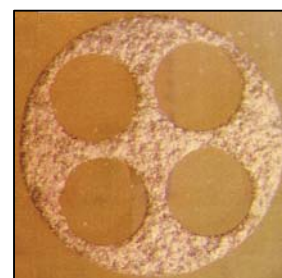
A thin layer of Hydroxyapatite (HAP) is coated onto the top surface of Disk-cylinder for better fixation of Disk to Tympanic Membrane (TM).

The HAP coating gives a firmer grip of the prosthesis with the TM. It acts as an intermediate layer between TM and the titanium disc. The prosthesis has the conducting capabilities of Titanium and the excellent biocompatibility of HAP which provides excellent flexibility and comfort for the surgeon.

- **HAP Coating thickness:  $35\mu\text{m} \pm 5\mu\text{m}$ .**
- **Adhesion of HAP with Titanium:  $\geq 15\text{MPa}$**

Features:

- Favorable fixation with TM (Fibroblast cell fixation within HAP pores)
- Light Weight compare to conventional HAP prostheses.
- Excellent biocompatibility.
- Least extrusion due to HAP coating.
- Provides good flexibility.
- Good visibility during implantation of prosthesis on footplate.



REF Number	Shaft Diameter	Disk Diameter	Functional Length	Total Length (L)	Units per package
E1207	0.30	3.00 HAp Coated	1.75-5.00	5.00	1 pc, Gamma Sterile
E1208	0.30	3.00 HAp Coated	3.00-7.00	7.00	1 pc, Gamma Sterile

## Tita-prosthesis Piston type Loop

(OSSEOUS: Titanium Piston)

➤ Offers best possible length selection.

**Material: CP Titanium Medical Grade 2 (ASTM F67)**

Features:

- Only one **OSSEOUS: Titanium Piston** is required as a Stapes piston.
- Made up of excellent biocompatible Titanium material.
- Easy loop introduction.
- Faster surgical procedure and enhanced patient safety.
- Stable design provides maximum sound output.
- Reduced risk of osteonecrosis.
- MRI Compatible.



REF Number	Shaft Diameter	Loop Shaft Diameter	Functional Length	Length (L)	Units per package
E1103	0.40	0.20	3.50-7.00	7.00	1 pc, Gamma Sterile

## Tita-PTFE Vario Piston type Loop

(OSSEOUS: Tita-PTFE Piston)

➤ Offers best possible length selection.

**Material: CP Titanium Medical Grade 2 (ASTM F67) & PTFE**

Features:

- Only one **OSSEOUS: Tita-PTFE Piston** is required as a Stapes piston.
- Made up of excellent biocompatible Titanium and PTFE material.
- Easy loop introduction.
- Faster surgical procedure and enhanced patient safety.
- Stable design provides maximum sound output.
- Reduced risk of osteonecrosis.



REF Number	Shaft Diameter	Loop Shaft Diameter	Functional Length	Length (L)	Units per package
E4119	0.40	0.20	4.00-7.00	7.00	1 pc, Gamma Sterile

## Super Titanium Vario Piston type Loop (OSSEOUS: Super Titanium Piston)

- Flat band loop with Self Crimping Super Titanium material

### Material: Titanium (Elastic Properties) Medical Grade

Features:

- Only one **OSSEOUS: Super Titanium Piston** is required as a Stapes piston.
- More Elastic Titanium material for self crimping effect.
- Simplified loop introduction to Incus by easy downward movement.
- Elastic self crimping loop shortens the time of surgery.
- Stable design provides maximum sound output.
- Reduced risk of osteonecrosis.
- MRI Compatible.



REF Number	Shaft Diameter	Loop Shaft Diameter	Functional Length	Length (L)	Units per package
E9131	0.40	0.20	3.50-7.00	7.00	1 pc, Gamma Sterile

## Super Tita-PTFE Vario Piston type Loop (OSSEOUS: Super Tita-PTFE Piston)

- Flat band loop with Self Crimping Super Titanium material

### Material: Titanium (Elastic Properties) & PTFE Medical Grade

Features:

- Only one **OSSEOUS: Super Tita-PTFE Piston** is required as a Stapes piston.
- More Elastic Titanium material for self crimping effect.
- Simplified loop introduction to Incus by easy downward movement.
- Elastic self crimping loop shortens the time of surgery.
- Stable design provides maximum sound output.
- Reduced risk of osteonecrosis.



REF Number	Shaft Diameter	Loop Shaft Diameter	Functional Length	Length (L)	Units per package
E9132	0.40	0.20	4.00-7.00	7.00	1 pc, Gamma Sterile

## Superelastic NITINOL-PTFE Vario Piston type Loop (OSSEOUS: NITINOL-PTFE Piston)

- Flat band loop with Super Elastic NITINOL material

**Material: Super Elastic NITINOL & PTFE Medical Grade**

Features:

- Only one **OSSEOUS: NITINOL-PTFE Piston** is required as a Stapes piston.
- Super Elastic property of NITINOL material provides self crimping effect.
- Simplified loop introduction to Incus by easy downward movement.
- Super Elastic self crimping loop shortens the time of surgery.
- Stable design provides maximum sound output.
- Reduced risk of osteonecrosis.



REF Number	Shaft Diameter	Loop Shaft Diameter	Functional Length	Length (L)	Units per package
E8130	0.40	0.20	4.00-7.00	7.00	1 pc, Gamma Sterile

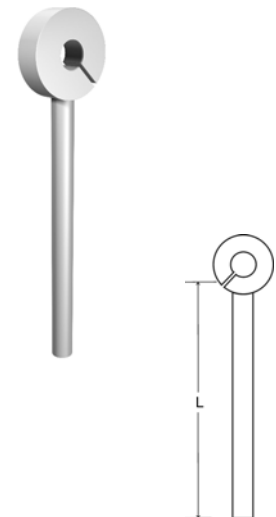
## PTFE Stapes Piston

- Using smooth jaw alligator forceps, the piston loop can be expanded with a pick to slip over the Incus.

**Material: PTFE (Polytetrafluoroethylene)**

Features:

- "Plastic memory" provides secure closure.
- Conventional design for easy attachment with Long process of Incus.
- Can be trimmed from 6.00 mm to 3.50 mm.



REF Number	Piston Diameter	Loop Inner Diameter	Functional Length	Length (L)	Units per package
E2127	0.50	0.60	3.50-6.00	6.00	1 pc, ETO Sterile
E2128	0.40	0.60	3.50-6.00	6.00	1 pc, ETO Sterile
E2129	0.60	0.60	3.50-6.00	6.00	1 pc, ETO Sterile

## INSTRUMENTATION FOR MIDDLE EAR IMPLANTS

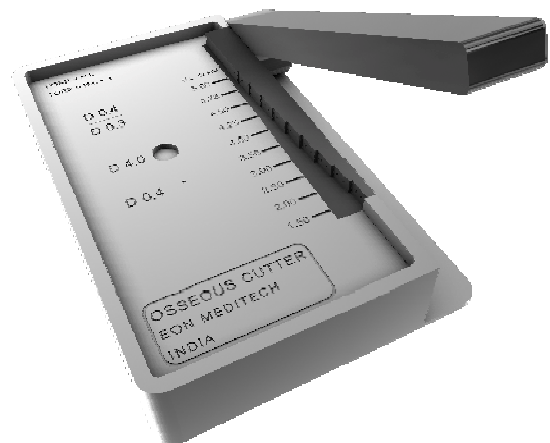
### OSSEOUS CUTTER

**Material: Stainless Steel/Aluminum (Autoclavable)**

Osseous cutter is used to trim the Osseous Surgical implants to optimal length in accordance with the patient's anatomical condition and surgical requirement. The following prostheses can be trimmed using this cutter:

- Tita-prostheses type Partial Vario Campana
- Tita-prostheses type Total Vario Cask
- Tita-Prostheses Piston Type Loop

REF Number	Product	Units per package
EI01	OSSEOUS CUTTER	1 pc, Non Sterile

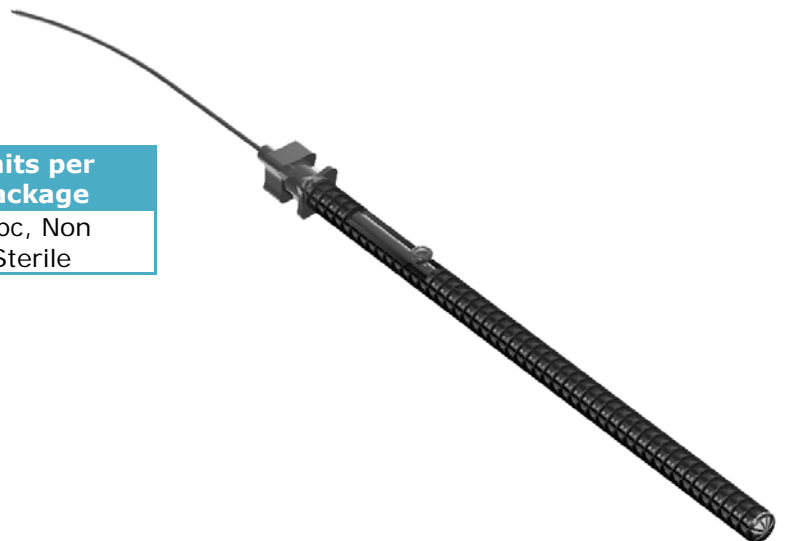


### OSSEOUS SIZER

**Material: Stainless Steel (Autoclavable)**

Osseous Sizer is used to measure the distance between any two points in the middle ear cavity which is to be connected using prosthesis. For instance, In a Stapedioplasty surgery the exact distance between the long process of the Incus and the footplate can be measured using the Osseous Sizer and accordingly the Osseous surgical implants can be trimmed using Osseous cutter (REF: EI01).

REF Number	Product	Units per package
EI02	OSSEOUS SIZER	1 pc, Non Sterile





# OTOLOGICAL VENTILATION TUBES



- Tita-prosthesis Vent Tube type Collar Button (Titanium)
- Donaldson (Fluoroplastic)
- Collar Button (Fluoroplastic)
- Shah & Mini Shah (Fluoroplastic)
- Shepard (Fluoroplastic)
- Straight Tube (Fluoroplastic)
- Bevel Bobbin (Fluoroplastic)
- Reuter Bobbin (Fluoroplastic)
- Baxter Beveled Bobbin (Fluoroplastic)
- Armstrong (Fluoroplastic)
- Modified Armstrong (Fluoroplastic)
- Donaldson (Silicone)
- Paparella (Silicone)
- T Tubes (Silicone)



403, B Tower, Diamond World, Mangadh Chowk,  
Varachha Road, Surat-395006,  
Gujarat, India.

Phone: +91 261 3072190.

E-mail ID: [info@eonmeditech.com](mailto:info@eonmeditech.com)  
[sales@eonmeditech.com](mailto:sales@eonmeditech.com)

[www.eonmeditech.com](http://www.eonmeditech.com)



## Tita-prosthesis Vent Tube type Collar Button (OSSEOUS: Vent Tube)

➤ Offers best possible length selection.

**Material: CP Titanium Medical Grade 2 (ASTM F67)**

Features:

- Excellent tissue biocompatibility.
- Antibacterial effect.
- Smooth surfaces that facilitate secretion drainage.
- Simple implantation.
- Atraumatic Design.
- MRI Compatible.



REF Number	Inner Diameter	Inner Flange Diameter	Outer Flange Diameter	Units per package
E1104	1.40	2.55	2.55	1 pc, Gamma Sterile
E1105	1.30	2.55	2.55	1 pc, Gamma Sterile
E1106	1.50	2.75	2.75	1 pc, Gamma Sterile

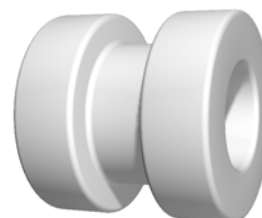
## Donaldson

➤ The large lumen offers good ventilation.

**Material: Medical Grade Fluoroplastic**

Features:

- Short term ventilation tube.
- Dual Flange provides good migration and extrusion resistance.



REF Number	Inner Diameter	Inner Flange Diameter	Outer Flange Diameter	Total Length	Units per package
E2124	1.14	2.30	2.30	2.20	1 pc, ETO Sterile

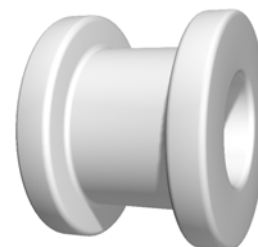
## Collar Button

- Conventional design for easy insertion.

**Material: Medical Grade Fluoroplastic**

Features:

- Classic Design
- Midterm ventilation tube



REF Number	Inner Diameter	Inner Flange Diameter	Outer Flange Diameter	Total Length	Units per package
E2123	1.27	3.00	3.00	2.15	1 pc, ETO Sterile
E2125	1.14	2.30	2.30	2.15	1 pc, ETO Sterile

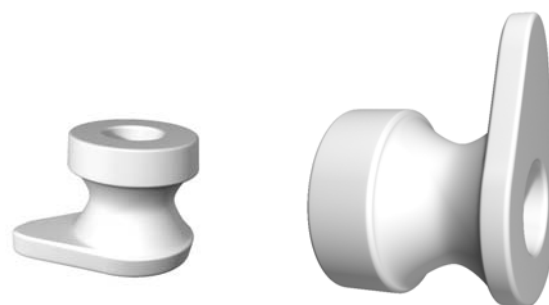
## Shah & Mini Shah

- Wedge shaped inner flange facilitates insertion.

**Material: Medical Grade Fluoroplastic**

Features:

- Mid term ventilation tube.
- Good extrusion resistance.



REF Number	Inner Diameter	Inner Flange Diameter	Outer Flange Diameter	Total Length	Units per package
E2112	1.14	3.40	2.30	2.40	1 pc, ETO Sterile
E2113	0.76	2.20	1.50	1.50	1 pc, ETO Sterile

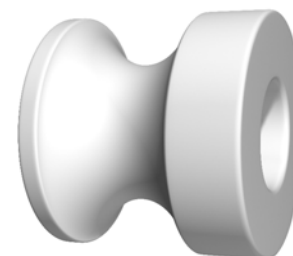
## Shepard

- Most popular design due to ease of insertion with forceps.

**Material: Medical Grade Fluoroplastic**

Features:

- Classic Design
- Short term ventilation tube



REF Number	Inner Diameter	Inner Flange Diameter	Outer Flange Diameter	Total Length	Units per package
E2114	1.14	2.40	2.40	2.20	1 pc, ETO Sterile

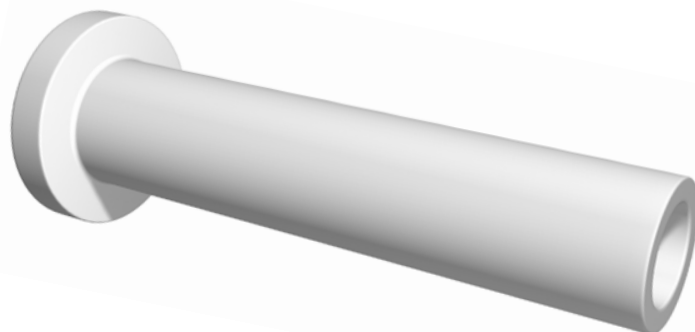
## Straight Tube

- Smaller inner flange facilitates insertion in a smaller incision.

**Material: Medical Grade Fluoroplastic**

Features:

- Smaller inner flange.
- Longer shaft lengths may help resist water migration into the middle ear.
- Can be trimmed to length.
- Long term ventilation tube.



REF Number	Inner Diameter	Inner Flange Diameter	Outer Flange Diameter	Total Length	No. of Pcs/ Package
E2116	1.14	2.70	-	7.25	1 pc, ETO Sterile

## Bevel Bobbin

- The beveled shape resists occlusion and clears easily.

**Material: Medical Grade Fluoroplastic**

Features:

- Designed to enhance retention and aeration.
- The tapered lumen assists the surgeon in cleaning if necessary.



REF Number	Inner Diameter	Inner Flange Diameter	Outer Flange Diameter	Total Length	No. of Pcs/ Package
E2117	1.14	2.80	2.80	1.70	1 pc, ETO Sterile

## Reuter Bobbin

- Conventional design for easy insertion.

**Material: Medical Grade Fluoroplastic**

Features:

- Classic Design
- Midterm ventilation tube



REF Number	Inner Diameter	Inner Flange Diameter	Outer Flange Diameter	Total Length	Units per package
E2137	1.14	2.30	2.30	1.60	1 pc, ETO Sterile

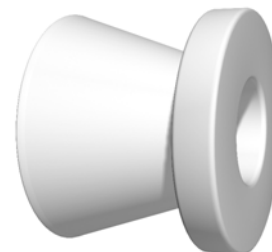
## Baxter Beveled Bobbin

- Conventional design for easy insertion.

**Material: Medical Grade Fluoroplastic**

Features:

- Combine features of Bevel Bobbin and the Reuter Bobbin
- Midterm ventilation tube



REF Number	Inner Diameter	Inner Flange Diameter	Outer Flange Diameter	Total Length	Units per package
E2136	1.27	2.80	2.80	2.20	1 pc, ETO Sterile

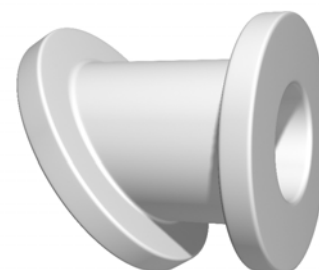
## Armstrong

- Beveled inner flange, reliable with tympanic membrane (Ear Drum) angle for easier insertion and removal.

**Material: Medical Grade Fluoroplastic**

Features:

- Mid-term ventilation tube.
- Beveled inner flange.
- Better visibility through tube & Good extrusion resistance.



REF Number	Inner Diameter	Inner Flange Diameter	Outer Flange Diameter	Total Length	Units per Package
E2109	1.14	3.50	3.20	3.80	1 pc, ETO Sterile

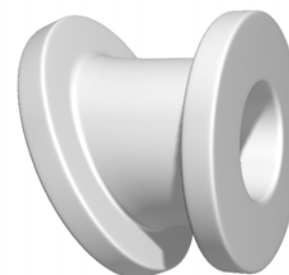
## Modified Armstrong

- Modified angle facilitates insertion into the myringotomy.

**Material: Medical Grade Fluoroplastic**

Features:

- Mid-term ventilation tube.
- Beveled inner flange.
- Better visibility through tube.
- Good extrusion resistance & Easier insertion.



REF Number	Inner Diameter	Inner Flange Diameter	Outer Flange Diameter	Total Length	Units per Package
E2110	1.14	3.50	3.20	2.30	1 pc, ETO Sterile

## Donaldson

- The large lumen offers good ventilation.

**Material: Medical Grade Silicone**

Features:

- Short term ventilation tube.
- Dual Flange provides good migration and extrusion resistance.



REF Number	Inner Diameter	Inner Flange Diameter	Outer Flange Diameter	Total Length	Units per Package
E3111	1.10	2.30	2.30	2.20	1 pc, ETO Sterile

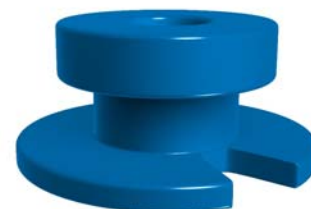
## Paparella

- The notched inner flange is designed for a "twist-in" insertion in a smaller incision.

**Material: Medical Grade Silicone**

Features:

- Short term ventilation tube.
- Dual Flange provides good migration and extrusion resistance.



REF Number	Inner Diameter	Inner Flange Diameter	Outer Flange Diameter	Total Length	Units per Package
E3126	1.14	2.40	2.10	1.60	1 pc, ETO Sterile

## T Tubes

- T-tube offer the surgeon a long-term ventilation tube that is easily inserted through a smaller incision and is designed to remain firmly positioned in the tympanic membrane. Flanges, it is easily extracted.

**Material: Medical grade Silicone**

Features:

- Long term ventilation tube.
- Can be trimmed to length.
- Proven and popular design.



REF Number	Inner Diameter	Outer Flange Diameter	Flange Width	Total Length	No. of Pcs/ Package
E3115S	1.14	1.70	8.00	6.00	1 pc, ETO Sterile
E3115M	1.14	1.70	8.00	9.00	1 pc, ETO Sterile
E3115L	1.14	1.70	8.00	12.00	1 pc, ETO Sterile

# ENT PVA DRESSINGS



- Ear Wicks & Packs
- Standard Nasal Dressings
- Anatomical Nasal Dressings
- Epistaxis Nasal Dressings
- Sinus Packs



403, B Tower, Diamond World, Mangadh Chowk,  
Varachha Road, Surat-395006,  
Gujarat, India.

Phone: +91 261 3072190.

E-mail ID: [info@eonmeditech.com](mailto:info@eonmeditech.com)

[sales@eonmeditech.com](mailto:sales@eonmeditech.com)

[www.eonmeditech.com](http://www.eonmeditech.com)





## EAR PVA DRESSINGS

REF Number	Product Name	Specification	Product Description	Units per package
E7161	Ear wick	Ø 9.0mm x 15.0mm	No string	10 pcs, Gamma Sterile
E7162	Ear wick	Ø 9.0mm x 24.0mm	No string	10 pcs, Gamma Sterile
E7163	Ear wick	Ø 12.0mm x 15.0mm	No string	10 pcs, Gamma Sterile
E7164	Ear wick	Ø 12.0mm x 24.0mm	No string	10 pcs, Gamma Sterile
E7165	Ear Pack	Ø 9.0mm x 15.0mm	With String	10 pcs, Gamma Sterile
E7166	Ear Pack	Ø 9.0mm x 24.0mm	With String	10 pcs, Gamma Sterile
E7167	Ear Pack	Ø 12.0mm x 15.0mm	With String	10 pcs, Gamma Sterile
E7168	Ear Pack	Ø 12.0mm x 24.0mm	With String	10 pcs, Gamma Sterile
E7169	Ear wick	Ø 9.0mm x 15.0mm	Fenestrated	10 pcs, Gamma Sterile
E7170	Ear wick	Ø 9.0mm x 24.0mm	Fenestrated	10 pcs, Gamma Sterile

## STANDARD NASAL DRESSINGS

REF Number	Product Name	Specification	Product Description	Units per package
E7176	Nasal Dressing	4.5cm x1.5cm x2.0cm	No string	10 pcs, Gamma Sterile
E7177	Nasal Dressing	4.5cm x1.5cm x2.0cm	With String	10 pcs, Gamma Sterile
E7178	Nasal Dressing	4.5cm x1.5cm x2.0cm	With String & Tube	10 pcs, Gamma Sterile
E7179	Nasal Dressing	4.5cm x1.0cm x2.0cm	Thin	10 pcs, Gamma Sterile
E7180	Nasal Dressing	8.0cm x1.5cm x2.0cm	No string	10 pcs, Gamma Sterile
E7181	Nasal Dressing	8.0cm x1.5cm x2.0cm	With String	10 pcs, Gamma Sterile
E7182	Nasal Dressing	8.0cm x1.5cm x2.0cm	With String & Tube	10 pcs, Gamma Sterile
E7183	Nasal Dressing	8.0cm x1.0cm x2.0cm	Thin	10 pcs, Gamma Sterile



## ANATOMICAL NASAL DRESSINGS

REF Number	Product Name	Specification	Product Description	Units per package
E7188	Anatomical Nasal Dressing	8.0cm x1.5cm x3.0cm	With String	10 pcs, Gamma Sterile
E7189	Anatomical Nasal Dressing	8.0cm x1.5cm x3.0cm	With String & Tube	10 pcs, Gamma Sterile
E7190	Anatomical Nasal Dressing	8.0cm x1.5cm x2.0cm	Thin	10 pcs, Gamma Sterile

## EPISTAXIS NASAL DRESSINGS

REF Number	Product Name	Specification	Product Description	Units per package
E7184	Epistaxis Nasal Dressing	10.0cm x1.5cm x2.5cm	No String	10 pcs, Gamma Sterile
E7185	Epistaxis Nasal Dressing	10.0cm x1.5cm x2.5cm	With String	10 pcs, Gamma Sterile
E7186	Epistaxis Nasal Dressing	10.0cm x1.5cm x2.5cm	With String & Tube	10 pcs, Gamma Sterile
E7187	Epistaxis Nasal Dressing	10.0cm x1.0cm x2.5cm	Thin	10 pcs, Gamma Sterile

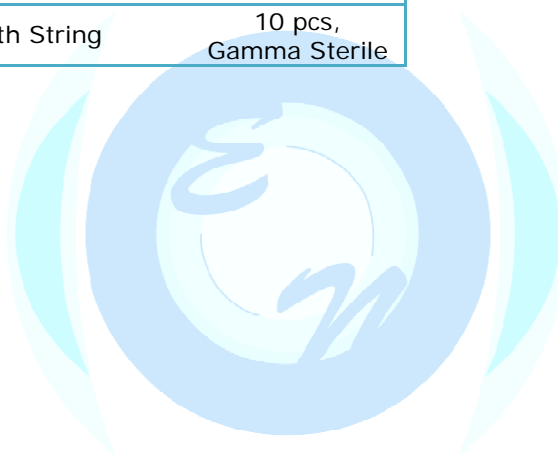
## SINUS PACKS

REF Number	Product Name	Specification	Product Description	Units per package
E7191	Sinus Pack	3.5cm x1.2cm x0.6cm	With String	10 pcs, Gamma Sterile
E7192	Sinus Pack	3.5cm x1.2cm x0.9cm	With String	10 pcs, Gamma Sterile



403, B Tower, Diamond World, Mangadh Chowk,  
Varachha Road, Surat-395006,  
Gujarat, India.  
Phone: +91 261 3072190.  
E-mail ID: [info@eonmeditech.com](mailto:info@eonmeditech.com)  
[sales@eonmeditech.com](mailto:sales@eonmeditech.com)

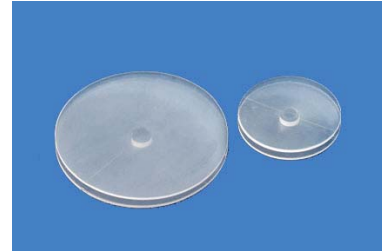
[www.eonmeditech.com](http://www.eonmeditech.com)



## Nasal Septal Button

- For non-surgical closure of nasal perforations.

**Material: Medical grade silicone**



REF Number	Product descriptions	Size (cm)	Units per package
E3145S	Nasal Septal Button Standard	3.0	1 pc, E.T.O. Sterile
E3145L	Nasal Septal Button Large	5.0	1 pc, E.T.O. Sterile

## Internal Nasal Airway Splint

- Provides septal support and allows nasal breathing post-op through integral airway.

**Material: Medical grade silicone**

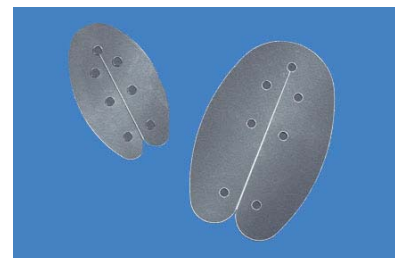


REF Number	Product Name	Units per package
E3147S	Nasal Airway Splint Standard	1 pair, E.T.O. Sterile
E3147L	Nasal Airway Splint Large	1 pair, E.T.O. Sterile

## Internal Bi-valve Splint

- Atraumatic insertion and removal.

**Material: Medical grade silicone & Also available in PTFE**



REF Number	Product Name	Thickness (mm)	Units per package
E3148S	Bi-valve Splint Standard	0.25	1 pair, E.T.O. Sterile
E3148T	Bi-valve Splint Thick	0.50	1 pair, E.T.O. Sterile

## Silicone Sheet (Custom Internal Splint)

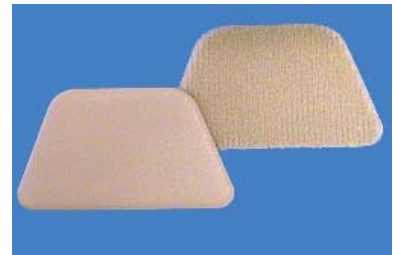
- Offers best possible length selection.

**Material: Medical grade silicone & Also available in PTFE**

REF Number	Product Name	Size (mm)	Thickness (mm)	Units per package
E3146S	Silicone Sheet	55 x 75	3.0	1 pc, E.T.O. Sterile
E3146T	Silicone Sheet	55 x 75	5.0	1 pc, E.T.O. Sterile

## External Nasal Splint - Thermoplastic

- Cosmetically pleasing & Easy to apply - adhesive backing



REF Number	Product Name	Units per package
E5150M	External Thermoplastic Splint Mini	1 pc, Non-Sterile
E5150S	External Thermoplastic Splint Standard	1 pc, Non-Sterile
E5150C	External Thermoplastic Splint Custom-Cut	1 pc, Non-Sterile

## External Nasal Splint - Aluminium

- Cosmetically pleasing & Easy to apply - adhesive backing

REF Number	Product Name	Units per package
E6149M	External Aluminium Splint Mini	1 pc, Non-Sterile
E6149S	External Aluminium Splint Standard	1 pc, Non-Sterile
E6149L	External Aluminium Splint Large	1 pc, Non-Sterile