



Welcome, and Thank You for your interest in Grace Medical. We are a global market leader in ENT, offering an extensive range of products to treat disorders of the ear, nose and throat. We strive each and every day to help improve patient care. Simply put, we want to make a difference. We are a socially responsible company, committed to making long-term contributions to our specialty through research, education and support of humanitarian efforts.

It starts with world-class product designs, proven materials, and a commitment to set the gold standard in customer service. We offer a personal touch rarely seen in today's business world. Have a special need? Give us a call, we'd love to help.

Grace Medical brings passion, focus and energy to everything we do. Innovation. Quality. Customer Care. Integrity. Reliability.

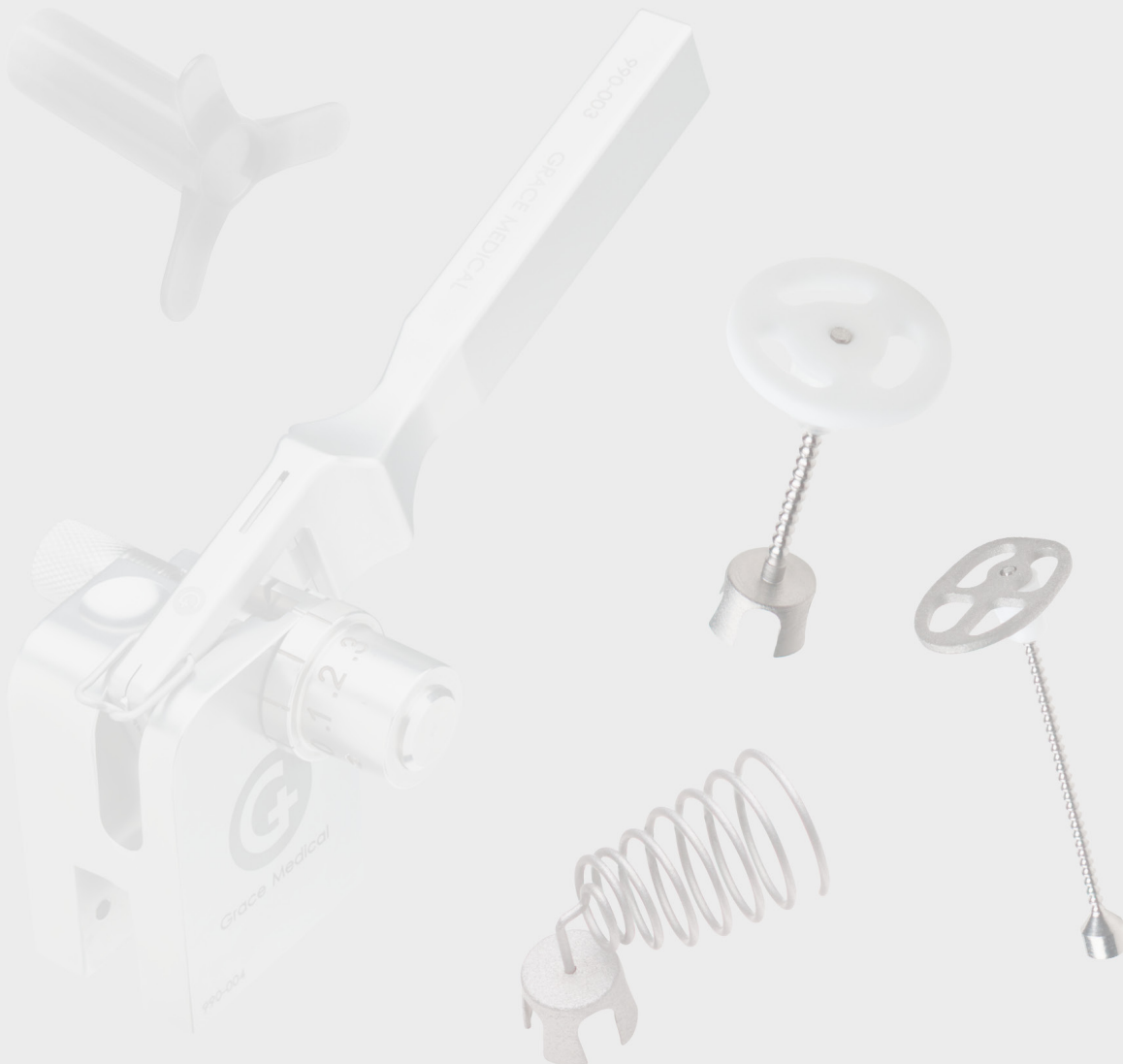
Your partner for ENT healthcare.



8500 WOLF LAKE DRIVE, SUITE 110
MEMPHIS, TN 38133 USA
901.386.0990 • TOLL FREE 1.866.472.2363
FAX: 901.386.0950
info@gracemedical.com • www.gracemedical.com

OSSICULAR PROSTHESES	3
STAPES PROSTHESES	25
VENTILATION TUBES & MYRINGOTOMY ACCESSORIES	33
SPECIALTY PRODUCTS	45
SURGICAL INSTRUMENTS	51
OFFICE INSTRUMENTS	63
INSTRUMENT SETS	75
PRODUCT INFORMATION AND TRADE POLICY	91

Ossicular Prostheses



Ossicular Prostheses

OFFSET ALTO TOTAL

Ref. #	Material	Head Size	Adjustable Length	Distal End Dia.
600	Titanium	2.50mm x 3.50mm	3.00mm to 7.00mm	0.8mm



OFFSET ALTO PARTIAL

Ref. #	Material	Head Size	Adjustable Length	Distal End Dia.
650	Titanium	2.50mm x 3.50mm	2.00mm to 5.60mm	1.45mm cup



CENTERED ALTO TOTAL

Ref. #	Material	Head Size	Adjustable Length	Distal End Dia.
605	Titanium	3.00mm	3.00mm to 7.00mm	0.8mm



CENTERED ALTO TOTAL W/ INTEGRATED SHOE

Ref. #	Material	Head Size	Adjustable Length	Distal End
604	Titanium	3.00mm	3.00mm to 7.00mm	0.8mm x 2.30mm

Designed in conjunction with Jacques Herzog, MD, St. Louis, MO



CENTERED ALTO PARTIAL

Ref. #	Material	Head Size	Adjustable Length	Distal End Dia.
655	Titanium	3.00mm	2.00mm to 5.60mm	1.45mm cup



CENTERED ALTO BYTE PARTIAL

Ref. #	Material	Head Size	Adjustable Length	Distal End
655B	Titanium	3.00mm	2.00mm to 5.60mm	Adjustable

*May not be available in all countries



OFFSET NANO ALTO BYTE PARTIAL

Ref. #	Material	Head Size	Adjustable Length	Distal End
654	Titanium	1.50mm x 2.50mm	2.00mm to 5.60mm	Adjustable

*May not be available in all countries



SILVERSTEIN ALTO TOTAL w/ TACK

Ref. #	Material	Head Size	Adjustable Length	Distal End Dia.
601	Titanium	2.50mm x 3.50mm	3.00mm to 7.00mm	0.8mm

Designed in conjunction with Herb Silverstein, MD, Sarasota, FL



OFFSET NANO ALTO TOTAL

Ref. #	Material	Head Size	Adjustable Length	Distal End Dia.
603	Titanium	1.50mm x 2.50mm	3.00mm to 7.00mm	0.8mm

Designed in conjunction with Peter Weber, MD, Boston, MA



OFFSET NANO ALTO TOTAL w/ INTEGRATED SHOE

Ref. #	Material	Head Size	Adjustable Length	Distal End
607	Titanium	1.50mm x 2.50mm	3.00mm to 7.00mm	0.86mm x 1.27mm

Designed in conjunction with Peter Weber, MD, Boston, MA



OFFSET NANO ALTO PARTIAL

Ref. #	Material	Head Size	Adjustable Length	Distal End Dia.
653	Titanium	1.50mm x 2.50mm	2.00mm to 5.60mm	1.45mm cup

Designed in conjunction with Peter Weber, MD, Boston, MA



CENTERED NANO ALTO TOTAL

Ref. #	Material	Head Size	Adjustable Length	Distal End Dia.
611	Titanium	1.50mm x 2.50mm	3.00mm to 7.00mm	0.8mm

Designed in conjunction with Bruce Gantz, MD, Iowa City, IA



CENTERED NANO ALTO PARTIAL

Ref. #	Material	Head Size	Adjustable Length	Distal End Dia.
651	Titanium	1.50mm x 2.50mm	2.00mm to 5.60mm	1.45mm cup

Designed in conjunction with Bruce Gantz, MD, Iowa City, IA



OWENS ASSURE ALTO TOTAL W/ INTEGRATED SHOE

Ref. #	Material	Head Size	Adjustable Length	Distal End
602	Titanium	2.00mm x 2.50mm	3.00mm to 7.00mm	0.8mm x 2.30mm

Designed in conjunction with Robert Owens, MD, Dallas, TX



OWENS ASSURE ALTO TOTAL

Ref. #	Material	Head Size	Adjustable Length	Distal End Dia.
602R	Titanium	2.00mm x 2.50mm	3.00mm to 7.00mm	0.8mm

Designed in conjunction with Robert Owens, MD, Dallas, TX



OWENS ASSURE ALTO PARTIAL

Ref. #	Material	Head Size	Adjustable Length	Distal End Dia.
652	Titanium	2.00mm x 2.50mm	2.00mm to 5.60mm	1.45mm cup

Designed in conjunction with Robert Owens, MD, Dallas, TX



HA ALTO TOTAL

Ref. #	Material	Head Size	Adjustable Length	Distal End Dia.
620	HA/Titanium	1.80mm x 3.00mm	3.00mm to 7.00mm	0.8mm



HA ALTO PARTIAL

Ref. #	Material	Head Size	Adjustable Length	Distal End Dia.
670	HA/Titanium	1.80mm x 3.00mm	2.00mm to 5.60mm	1.45mm cup



BOJRAB ALTO TOTAL

Ref. #	Material	Head Size	Adjustable Length	Distal End Dia.
625	HA/Titanium	1.50mm x 2.00mm	3.00mm to 7.00mm	0.8mm

Designed in conjunction with Dennis Bojrab, MD, Farmington Hills, MI



BOJRAB ALTO TOTAL W/ INTEGRATED SHOE

Ref. #	Material	Head Size	Adjustable Length	Distal End
625B	HA /Titanium	1.50mm x 2.00mm	3.00mm to 7.00mm	0.86mm x 1.27mm

Designed in conjunction with Dennis Bojrab, MD, Farmington Hills, MI



BOJRAB ALTO PARTIAL

Ref. #	Material	Head Size	Adjustable Length	Distal End Dia.
675	HA/Titanium	1.50mm x 2.00mm	2.00mm to 5.60mm	1.45mm cup

Designed in conjunction with Dennis Bojrab, MD, Farmington Hills, MI



BOJRAB ALTO CONCISE

Ref. #	Material	Head Size	Adjustable Length	Distal End Dia.
671	HA/Titanium	1.50mm x 2.00mm	2.00mm to 2.50mm	1.45mm cup

Designed in conjunction with Dennis Bojrab, MD, Farmington Hills, MI



SATALOFF ALTO TOTAL

Ref. #	Material	Head Size	Adjustable Length	Distal End Dia.
624	HA /Titanium	1.80mm x 3.00mm	3.00mm to 7.00mm	0.8mm

Designed in conjunction with Robert Sataloff, MD, Philadelphia, PA



SATALOFF ALTO PARTIAL

Ref. #	Material	Head Size	Adjustable Length	Distal End Dia.
674	HA/Titanium	1.80mm x 3.00mm	2.00mm to 5.60mm	1.45mm cup

Designed in conjunction with Robert Sataloff, MD, Philadelphia, PA



HA LITE ALTO TOTAL

Ref. #	Material	Head Size	Adjustable Length	Distal End Dia.
630	HA/Titanium	3.00mm	3.00mm to 7.00mm	0.8mm



HA LITE ALTO TOTAL w/ INTEGRATED SHOE

Ref. #	Material	Head Size	Adjustable Length	Distal End
630B	HA/Titanium	3.00mm	3.00mm to 7.00mm	0.8mm x 2.30mm



HA LITE ALTO PARTIAL

Ref. #	Material	Head Size	Adjustable Length	Distal End Dia.
685	HA/Titanium	3.00mm	2.00mm to 5.60mm	1.45mm cup



DORNHOFFER ALTO TOTAL w/ SHOE & WINDOWS

Ref. #	Material	Head Size	Adjustable Length	Distal End
626	HA/Titanium	4.00mm x 3.25mm	3.00mm to 7.00mm	0.86mm x 1.27mm

Designed in conjunction with John Dornhoffer, MD, Little Rock, AR



DORNHOFFER ALTO TOTAL

Ref. #	Material	Head Size	Adjustable Length	Distal End Dia.
635	HA/Titanium	4.00mm x 3.25mm	3.00mm to 7.00mm	0.8mm

Designed in conjunction with John Dornhoffer, MD, Little Rock, AR



DORNHOFFER ALTO TOTAL w/ WINDOWS

Ref. #	Material	Head Size	Adjustable Length	Distal End Dia.
637	HA/Titanium	4.00mm x 3.25mm	3.00mm to 7.00mm	0.8mm

Designed in conjunction with John Dornhoffer, MD, Little Rock, AR



DORNHOFFER ALTO PARTIAL

Ref. #	Material	Head Size	Adjustable Length	Distal End Dia.
695	HA/Titanium	4.00mm x 3.25mm	2.00mm to 5.60mm	1.45mm cup

Designed in conjunction with John Dornhoffer, MD, Little Rock, AR



DORNHOFFER ALTO PARTIAL w/ WINDOWS

Ref. #	Material	Head Size	Adjustable Length	Distal End Dia.
687	HA/Titanium	4.00mm x 3.25mm	2.00mm to 5.60mm	1.45mm cup

Designed in conjunction with John Dornhoffer, MD, Little Rock, AR



DORNHOFFER FIXED LENGTH PARTIAL

Ref. #	Material	Head Size	Length	Distal End Dia.
690	HA/Titanium	4.00mm x 3.25mm	2.00mm	1.45mm cup

Designed in conjunction with John Dornhoffer, MD, Little Rock, AR



DORNHOFFER FIXED LENGTH PARTIAL w/ WINDOWS

Ref. #	Material	Head Size	Length	Distal End Dia.
691	HA/Titanium	4.00mm x 3.25mm	2.00mm	1.45mm cup

Designed in conjunction with John Dornhoffer, MD, Little Rock, AR



DORNHOFFER FOOTPLATE SHOE

Ref. #	Material	Length	Width	Height	ID
636-080	Titanium	1.40mm	1.09mm	1.14mm	0.8mm

Designed in conjunction with John Dornhoffer, MD, Little Rock, AR



HABERMAN ALTO TOTAL ROUND HEAD

Ref. #	Material	Head Size	Adjustable Length	Distal End Dia.
608	HA/Titanium	3.30mm	3.00mm to 7.00mm	0.8mm

Designed in conjunction with Rex Haberman, MD, Minneapolis, MN



HABERMAN ALTO PARTIAL ROUND HEAD

Ref. #	Material	Head Size	Adjustable Length	Distal End Dia.
659	HA/Titanium	3.30mm	2.00mm to 5.60mm	1.45mm cup

Designed in conjunction with Rex Haberman, MD, Minneapolis, MN



HABERMAN ALTO PARTIAL RECTANGLE HEAD

Ref. #	Material	Head Size	Adjustable Length	Distal End Dia.
658	HA/Titanium	3.00mm x 2.00mm	2.00mm to 5.60mm	1.45mm cup

Designed in conjunction with Rex Haberman, MD, Minneapolis, MN



MORETZ DELTA ALTO TOTAL

Ref. #	Material	Head Size	Adjustable Length	Distal End Dia.
647	HA/Titanium	2.20mm x 3.00mm	3.00mm to 7.00mm	0.8mm

Designed in conjunction with William Moretz, MD, Augusta, GA



MORETZ DELTA ALTO PARTIAL

Ref. #	Material	Head Size	Adjustable Length	Distal End Dia.
697	HA/Titanium	2.20mm x 3.00mm	2.00mm to 5.60mm	1.45mm cup

Designed in conjunction with William Moretz, MD, Augusta, GA



MORETZ ALTO TOTAL

Ref. #	Material	Head Size	Adjustable Length	Distal End Dia.
612-001L	HA/Titanium	1.90mm x 5.60mm	3.00mm to 7.00mm	0.8mm
612-002R	HA/Titanium	1.90mm x 5.60mm	3.00mm to 7.00mm	0.8mm

Designed in conjunction with William Moretz, MD, Augusta, GA



OFFSET DUO ALTO TOTAL w/ STAPES ADAPTOR

Ref. #	Material	Head Size	Adjustable Length	Torp Distal End Dia.	Cup Distal End Dia.
600A	Titanium	2.50mm x 3.50mm	2.00mm to 7.00mm	0.8mm	1.45mm cup

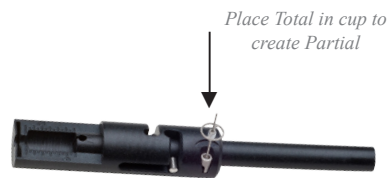
Designed in conjunction with Howard Francis, MD, Baltimore, MD



CENTERED DUO ALTO TOTAL w/ STAPES ADAPTOR

Ref. #	Material	Head Size	Adjustable Length	Torp Distal End Dia.	Cup Distal End Dia.
605A	Titanium	3.00mm	2.00mm to 7.00mm	0.8mm	1.45mm cup

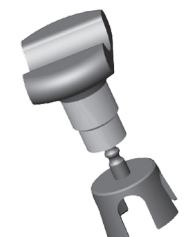
Designed in conjunction with Howard Francis, MD, Baltimore, MD



WEDGE INCUS STRUT

Ref. #	Material	Head Size	Adjustable Length	Distal End Dia.
657	Titanium	2.30mm x 1.50mm	1.75mm to 2.25mm	1.45mm cup
656	Titanium	2.30mm x 1.50mm	2.25mm to 3.50mm	1.45mm cup

Designed in conjunction with Cliff Megerian, MD, Cleveland, OH,
Dennis Bojrab, MD, Farmington Hills, MI, Joseph Chen, MD, Toronto, Ontario, Canada



KRAUS K-HELIX CROWN

Ref. #	Material	Coil Length	Distal End Dia.
756-300	Titanium	2.75mm	1.45mm cup

Designed in conjunction with Eric Kraus, MD, Greensboro, NC



KRAUS K-HELIX PISTON

Ref. #	Material	Coil Length	Functional Length	Distal End Dia.
757-300	Titanium	2.75mm	4.70mm	0.6mm

Designed in conjunction with Eric Kraus, MD, Greensboro, NC



K-HELIX FOOTPLATE SHOE

Ref. #	Material	Length	Width	Height	ID
636-060	Titanium	1.40mm	0.86mm	1.14mm	0.6mm



NITINOL ISJ

Ref. #	Material	Length
755	Nitinol	5.00mm



VINCENT TOTAL

Ref. #	Material	Head Size	Length	Distal End Dia.
280	HA /Flpl	2.00mm x 2.50mm	8.60mm	0.4mm

Designed in conjunction with Robert Vincent, MD, Causse Ear Clinic, Béziers, France



VINCENT ALTO TOTAL w/ BAND

Ref. #	Material	Head Size	Adjustable Length	Distal End Dia.
614	HA /Titanium	2.00mm x 3.30mm	3.00mm to 7.00mm	0.8mm

Designed in conjunction with Robert Vincent, MD, Causse Ear Clinic, Béziers, France

Not available for sale in the US



CENTERED ALTO TOTAL w/ BAND

Ref. #	Material	Head Size	Adjustable Length	Distal End Dia.
617	Titanium	3.00mm	3.00mm to 7.00mm	0.8mm

Not available for sale in the US



HA LITE ALTO TOTAL w/ BAND

Ref. #	Material	Head Size	Adjustable Length	Distal End Dia.
618	HA /Titanium	3.00mm	3.00mm to 7.00mm	0.8mm

Not available for sale in the US



BOJRAB ALTO TOTAL w/ BAND

Ref. #	Material	Head Size	Adjustable Length	Distal End Dia.
619	HA /Titanium	1.50mm x 2.00mm	3.00mm to 7.00mm	0.8mm

Designed in conjunction with Dennis Bojrab, MD, Farmington Hills, MI

Not available for sale in the US



STRASNICK PARTIAL TILT-TOP

Ref. #	Material	Head Size	Length	Distal End Dia.
270-600	Titanium/Otosil	3.00mm	6.10mm	1.12mm

Designed in conjunction with Barry Strasnick, MD, Norfolk, VA



STRASNICK TOTAL TILT-TOP

Ref. #	Material	Head Size	Length	Distal End Dia.
220-800	Titanium/Otosil	3.00mm	8.00mm	0.9mm

Designed in conjunction with Barry Strasnick, MD, Norfolk, VA



WEHRS SINGLE NOTCH INCUS-STAPES

Ref. #	Material	Length	Distal End Dia.
209	HA/Otosil	9.14mm	1.00mm



WEHRS SINGLE NOTCH INCUS

Ref. #	Material	Length	Distal End Dia.
259	HA/Otosil	8.10mm	1.10mm



WEHRS DOUBLE NOTCH INCUS-STAPES

Ref. #	Material	Length	Distal End Dia.
210	HA/Otosil	9.14mm	1.00mm



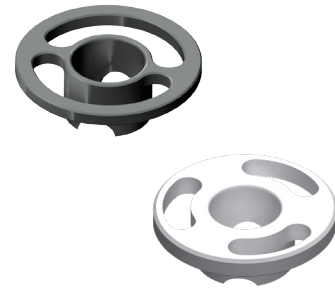
WEHRS DOUBLE NOTCH INCUS

Ref. #	Material	Length	Distal End Dia.
260	HA/Otosil	8.10mm	1.10mm



FRISBEE PARTIAL

Ref. #	Length	Material	Head Size	Distal End Dia.
750-050	0.5mm	Titanium	3.00mm	1.17mm
750-100	1.00mm			
750-150	1.50mm			
751-200	2.00mm			
749-050	0.5mm	HA	3.00mm	1.17mm
749-100	1.00mm			
749-150	1.50mm			



Designed in conjunction with Herb Silverstein, MD, Sarasota, FL
Designed in conjunction with Antonio De la Cruz, MD, Los Angeles, CA

PRECISE HA LITE TOTAL

Material	Type	Shaft Dia.	Distal End Dia.	Length	Ref. #
HA/Titanium	Centered	0.2mm	0.8mm	3.00mm	720-300
				3.25mm	720-325
				3.50mm	720-350
				3.75mm	720-375
				4.00mm	720-400
				4.25mm	720-425
				4.50mm	720-450
				4.75mm	720-475
				5.00mm	720-500
				5.25mm	720-525
				5.50mm	720-550
				5.75mm	720-575
				6.00mm	720-600
				6.25mm	720-625
				6.50mm	720-650
				6.75mm	720-675
				7.00mm	720-700



Designed in conjunction with Michael Hoffer, MD, San Diego, CA

PRECISE HA LITE PARTIAL

Material	Type	Shaft Dia.	Distal End Dia.	Length	Ref. #
HA/Titanium	Centered	0.2mm	1.45mm cup	1.75mm	770-175
				2.00mm	770-200
				2.25mm	770-225
				2.50mm	770-250
				2.75mm	770-275
				3.00mm	770-300
				3.25mm	770-325
				3.50mm	770-350
				3.75mm	770-375
				4.00mm	770-400
				4.25mm	770-425
				4.50mm	770-450



Designed in conjunction with Michael Hoffer, MD, San Diego, CA

PRECISE CENTERED TOTAL

Material	Type	Shaft Dia.	Distal End Dia.	Length	Ref. #
Titanium	Centered	0.2mm	0.8mm	3.00mm	705-300
				3.25mm	705-325
				3.50mm	705-350
				3.75mm	705-375
				4.00mm	705-400
				4.25mm	705-425
				4.50mm	705-450
				4.75mm	705-475
				5.00mm	705-500
				5.25mm	705-525
				5.50mm	705-550
				5.75mm	705-575
				6.00mm	705-600
				6.25mm	705-625
				6.50mm	705-650
				6.75mm	705-675
				7.00mm	705-700



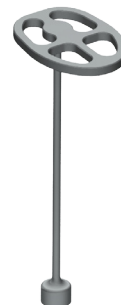
PRECISE CENTERED PARTIAL

Material	Type	Shaft Dia.	Distal End Dia.	Length	Ref. #
Titanium	Centered	0.2mm	1.45mm cup	0.75mm	765-075
				1.00mm	765-100
				1.25mm	765-125
				1.50mm	765-150
				1.75mm	765-175
				2.00mm	765-200
				2.25mm	765-225
				2.50mm	765-250
				2.75mm	765-275
				3.00mm	765-300
				3.25mm	765-325
				3.50mm	765-350
				3.75mm	765-375
				4.00mm	765-400
				4.25mm	765-425
				4.50mm	765-450
				4.75mm	765-475
				5.00mm	765-500
				5.25mm	765-525
				5.50mm	765-550



PRECISE OFFSET TOTAL

Material	Type	Shaft Dia.	Distal End Dia.	Length	Ref. #
Titanium	Off-Centered	0.2mm	0.8mm	3.00mm	700-300
				3.25mm	700-325
				3.50mm	700-350
				3.75mm	700-375
				4.00mm	700-400
				4.25mm	700-425
				4.50mm	700-450
				4.75mm	700-475
				5.00mm	700-500
				5.25mm	700-525
				5.50mm	700-550
				5.75mm	700-575
				6.00mm	700-600
				6.25mm	700-625
				6.50mm	700-650
				6.75mm	700-675
				7.00mm	700-700



PRECISE OFFSET PARTIAL

Material	Type	Shaft Dia.	Distal End Dia.	Length	Ref. #
Titanium	Off-Centered	0.2mm	1.45mm cup	0.75mm	751-075
				1.00mm	751-100
				1.25mm	751-125
				1.50mm	751-150
				1.75mm	750-175
				2.00mm	750-200
				2.25mm	750-225
				2.50mm	750-250
				2.75mm	750-275
				3.00mm	750-300
				3.25mm	750-325
				3.50mm	750-350
				3.75mm	750-375
				4.00mm	750-400
				4.25mm	750-425
				4.50mm	750-450



WILDCAT FOUR 2 THREE SOLID

Material	Type	Distal End	Length	Ref. #
Titanium	Centered	1.00mm x 1.78mm	3.00mm	707-300
			3.50mm	707-350
			4.00mm	707-400
			4.50mm	707-450
			5.00mm	707-500
			5.50mm	707-550



Designed in conjunction with Alan Micco, MD, Chicago, IL, Cliff Megerian, MD, Cleveland, OH, Seilesh Babu, Farmington Hills, MI

WILDCAT FOUR 2 THREE HOLLOW

Material	Type	Distal End	Length	Ref. #
Titanium	Centered	1.00mm x 1.78mm	3.00mm	706-300
			3.50mm	706-350
			4.00mm	706-400
			4.50mm	706-450
			5.00mm	706-500
			5.50mm	706-550



Designed in conjunction with Alan Micco, MD, Chicago, IL, Cliff Megerian, MD, Cleveland, OH, Seilesh Babu, Farmington Hills, MI

HA Total Prostheses

Type	Material	Shaft Dia.	Head Dia.	Length	Ref.#
Centered	HA	0.8mm	3.00mm	4.00mm	100
				6.00mm	101
				8.00mm	102
			4.00mm	4.00mm	103
				6.00mm	104
				8.00mm	105



HA Total Prostheses

Type	Material	Shaft Dia.	Head Dia.	Length	Ref.#
Offset	HA	0.8mm	4.00mm	4.00mm	106
				6.00mm	107
				8.00mm	108



HA Total Prostheses

Type	Material	Shaft Dia.	Head Dia.	Length	Ref.#
Notched	HA	0.8mm	4.00mm	4.00mm	109
				6.00mm	110
				8.00mm	111



HA Partial Prostheses

Type	Material	Length	Cannulation Dia.	Head Dia.	Ref.#
Centered	HA	5.00mm	1.17mm	3.00mm	150
				4.00mm	151



HA Partial Prostheses

Type	Material	Length	Cannulation Dia.	Head Dia.	Ref.#
Offset	HA	5.00mm	1.17mm	4.00mm	152



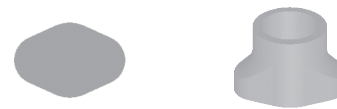
HA Partial Prostheses

Type	Material	Length	Cannulation Dia.	Head Dia.	Ref.#
Notched	HA	5.00mm	1.17mm	4.00mm	153



HA Footplate Shoe

Material	Width	Height	Ref. #
HA	2.00mm	1.32mm	192



HA Total Strut

Material	Length	Shaft Dia.	Ref. #
HA	8.00mm	0.8mm	191



HA Partial Strut

Material	Length	Cannulation Dia.	Ref. #
HA	2.75mm	1.17mm	190-275
HA	3.90mm	1.17mm	190-390
HA	4.90mm	1.17mm	190-490



Total Tilt Top

Type	Material	Length	Shaft Dia.	Head Dia.	Ref.#
Centered	Otosil / HA	8.00mm	1.00mm	3.00mm	200
				4.00mm	201



Total Tilt Top

Type	Material	Length	Shaft Dia.	Head Dia.	Ref.#
Offset	Otosil / HA	8.00mm	1.00mm	3.25mm	202
				3.50mm	207
				4.00mm	203



Total Tilt Top

Type	Material	Length	Shaft Dia.	Head Dia.	Ref.#
Notched	Otosil / HA	8.00mm	1.00mm	3.25mm	204
				3.50mm	208
				4.00mm	205



Total Tilt Top

Type	Material	Length	Shaft Dia.	Head Dia.	Ref.#
Notched	Otosil / HA	8.00mm	1.00mm	2.1mm x 2.9mm	206



Bojrab Universal

Type	Material	Total		Head Dia.	Ref.#
Notched	Otosil / HA	<i>Length</i>	<i>Shaft Dia.</i>	4.00mm x 3.25mm	293
		6.00mm	0.80mm		
		Partial			
		<i>Length</i>	<i>Cannulation Dia.</i>		
		2.30mm	1.17mm		



Designed in conjunction with Dennis Bojrab, MD, Farmington Hills, MI

Partial Tilt Top

Type	Material	Length	Cannulation Dia.	Head Dia.	Ref.#
Centered	Otosil / HA	6.00mm	1.12mm	3.00mm	250
				4.00mm	251



Partial Tilt Top

Type	Material	Length	Cannulation Dia.	Head Dia.	Ref.#
Offset	Otosil / HA	6.00mm	1.12mm	3.25mm	252
				3.50mm	257
				4.00mm	253



Partial Tilt Top

Type	Material	Length	Cannulation Dia.	Head Dia.	Ref.#
Notched	Otosil / HA	6.00mm	1.12mm	3.25mm	254
				3.50mm	258
				4.00mm	255



Partial Tilt Top

Type	Material	Length	Cannulation Dia.	Head Dia.	Ref.#
Notched	Otosil / HA	6.00mm	1.12mm	2.1mm x 2.9mm	256



Partial

Type	Material	Length	Cannulation Dia.	Head Dia.	Ref.#
Centered	Otosil / HA	6.00mm	1.12mm	3.00mm	270
				4.00mm	271



Partial

Type	Material	Length	Cannulation Dia.	Head Dia.	Ref.#
Offset	Otosil / HA	6.00mm	1.12mm	4.00mm	272



Partial

Type	Material	Length	Cannulation Dia.	Head Dia.	Ref.#
Notched	Otosil / HA	6.00mm	1.12mm	4.00mm	273





Stapes Prostheses

Fluoroplastic Piston

Material	Loop Dia.	Shaft Dia.	Ref. #	Length
Fluoroplastic	0.6mm	0.4mm	401-350	3.50mm
			401-400	4.00mm
			401-450	4.50mm
			401-500	5.00mm
			401-600	6.00mm
	0.5mm	0.4mm	408-450	4.50mm
			408-500	5.00mm
			408-600	6.00mm
	0.6mm	0.4mm	402-350	3.50mm
			402-400	4.00mm
			402-450	4.50mm
			402-500	5.00mm
			402-600	6.00mm
	0.8mm	0.4mm	403-350	3.50mm
			403-400	4.00mm
			403-450	4.50mm
			403-500	5.00mm
			403-600	6.00mm



Fluoroplastic Piston Arrigg Slit Modification

Material	Loop Dia.	Shaft Dia.	Ref. #	Length
Fluoroplastic	0.6mm	0.4mm	406-425	4.25mm
			406-450	4.50mm
			406-600	6.00mm



Titanium / Fluoroplastic Piston

Material	Type	Shaft Dia.	Ref. #	Length
Ti. / Fluoroplastic	Piston	0.6mm	409-350	3.50mm
			409-375	3.75mm
			409-400	4.00mm
			409-425	4.25mm
			409-450	4.50mm
			409-475	4.75mm
			409-500	5.00mm



Linstrom Piston

Material	Type	Shaft Dia.	Ref. #	Length
Platinum/Titanium	Piston	0.5mm	419-400	4.00mm
			419-425	4.25mm
			419-450	4.50mm
			419-475	4.75mm

Designed in conjunction with Christopher Linstrom, MD, New York, NY



Titanium Piston

Material	Type	Shaft Dia.	Ref. #	Length
Titanium	Piston	0.4mm	460-350	3.50mm
			460-375	3.75mm
			460-400	4.00mm
			460-425	4.25mm
			460-450	4.50mm
			460-475	4.75mm
			460-500	5.00mm
			460-525	5.25mm
			460-550	5.50mm
		0.5mm	413-400	4.00mm
			413-425	4.25mm
			413-450	4.50mm
			413-475	4.75mm
		0.6mm	461-350	3.50mm
			461-375	3.75mm
			461-400	4.00mm
			461-425	4.25mm
			461-450	4.50mm
			461-475	4.75mm
			461-500	5.00mm
			461-525	5.25mm
			461-550	5.50mm



Sataloff Malleus Piston

Material	Type	Shaft Dia.	Ref. #	Length
Titanium/Flpl	Piston	0.6mm	417-525	5.25mm
			417-550	5.50mm
			417-575	5.75mm
			417-600	6.00mm
			417-625	6.25mm

Designed in conjunction with Robert Sataloff, MD, Philadelphia, PA



Grace Piston

Material	Type	Shaft Dia.	Ref. #	Length
Platinum / Flpl	Piston	0.4mm	412-375	3.75mm
			412-400	4.00mm
			412-425	4.25mm
			412-450	4.50mm
			412-475	4.75mm
			412-500	5.00mm
			412-600	6.00mm
	0.5mm	0.5mm	452-375	3.75mm
			452-400	4.00mm
			452-425	4.25mm
			452-450	4.50mm
			452-475	4.75mm
			452-500	5.00mm
	0.6mm	0.6mm	453-375	3.75mm
			453-400	4.00mm
			453-425	4.25mm
			453-450	4.50mm
			453-475	4.75mm
			453-500	5.00mm



De la Cruz Piston

Material	Type	Shaft Dia.	Ref. #	Length
Platinum/Flpl	Piston	0.6mm	415-375	3.75mm
			415-400	4.00mm
			415-425	4.25mm
			415-450	4.50mm

Designed in conjunction with Antonio De la Cruz, MD, Los Angeles, CA



MEITI Piston

Material	Type	Shaft Dia.	Ref. #	Length
Platinum/Titanium	Piston	0.5mm	418-375	3.75mm
			418-400	4.00mm
			418-425	4.25mm
			418-450	4.50mm
			418-475	4.75mm

Designed in conjunction with Dennis Bojrab, MD and Michael LaRouere, MD, Farmington Hills, MI



Super E Piston

Material	Type	Shaft Dia.	Ref. #	Length
Flpl / Nitinol	Piston	0.5mm	465-375	3.75mm
			465-400	4.00mm
			465-425	4.25mm
			465-450	4.50mm
			465-475	4.75mm
			465-500	5.00mm
		0.6mm	466-375	3.75mm
			466-400	4.00mm
			466-425	4.25mm
			466-450	4.50mm
			466-475	4.75mm
			466-500	5.00mm

Designed in conjunction with Dennis Bojrab, MD, Farmington Hills, MI

*May not be available in all countries



Sanna Piston

Material	Type	Shaft Dia.	Ref. #	Length
Stainless Steel / Flpl	Piston	0.5mm	410-600	6.00mm

Designed in conjunction with Professor Mario Sanna, Piacenza, Italy



Eclipse Piston

Material	Type	Shaft Dia.	Ref. #	Length
Nitinol/Flpl	Piston	0.4mm	464-600	6.00mm
		0.5mm	467-375	3.75mm
			467-400	4.00mm
			467-425	4.25mm
			467-450	4.50mm
			467-475	4.75mm
			467-500	5.00mm
			467-600	6.00mm
		0.6mm	468-375	3.75mm
			468-400	4.00mm
			468-425	4.25mm
			468-450	4.50mm
			468-475	4.75mm
			468-500	5.00mm
			468-600	6.00mm



Eclipse Piston De la Cruz

Material	Type	Shaft Dia.	Ref. #	Length
Nitinol/Flpl	Piston	0.6mm	469-400	4.00mm
			469-425	4.25mm
			469-450	4.50mm
			469-475	4.75mm

Designed in conjunction with Antonio De la Cruz, MD, Los Angeles, CA



Eclipse Titanium Piston

Material	Type	Shaft Dia.	Ref. #	Length
Nitinol/Titanium	Piston	0.5mm	470-400	4.00mm
			470-425	4.25mm
			470-450	4.50mm
			470-475	4.75mm

Designed in conjunction with Frank Warren, MD, Portland, OR and Aaron Benson, MD, Toledo, OH



Eclipse Malleus Piston

Material	Type	Shaft Dia.	Ref. #	Length
Nitinol/Flpl	Piston	0.6mm	442-550	5.50mm
			442-600	6.00mm
			442-650	6.50mm
			442-700	7.00mm
			442-800	8.00mm

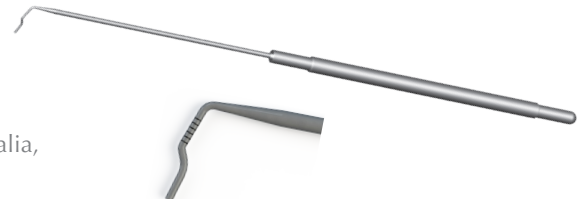
Designed in conjunction with Marcus Atlas, MD, FRACS, Ear Science Institute Australia, The University of Western Australia and Michael B. Gluth, MD, Chicago, IL



Eclipse Malleus Piston Measuring Rod

Ref. #	Material
901	Titanium

Designed in conjunction with Marcus Atlas, MD, FRACS, Ear Science Institute Australia, The University of Western Australia and Michael B. Gluth, MD, Chicago, IL



Robinson Bucket Handle

Material	Type	Shaft Dia.	Ref. #	Length
Titanium	Standard	0.4mm	420-350	3.50mm
			420-375	3.75mm
			420-400	4.00mm
			420-425	4.25mm
			420-450	4.50mm
			420-475	4.75mm
			420-500	5.00mm
		0.6mm	422-350	3.50mm
			422-375	3.75mm
			422-400	4.00mm
	Notched	0.6mm	422-425	4.25mm
			422-450	4.50mm
			422-475	4.75mm
			422-500	5.00mm
		0.8mm	424-400	4.00mm
			424-425	4.25mm
			424-450	4.50mm
			424-500	5.00mm



Lippy Bucket Handle

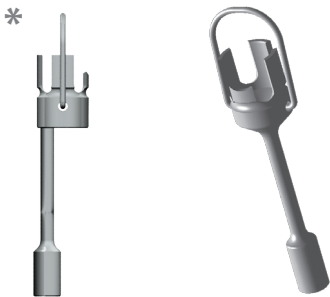
Material	Type	Shaft Dia.	Ref. #	Length
Titanium	Notched	0.4mm	421-350	3.50mm
			421-375	3.75mm
			421-400	4.00mm
			421-425	4.25mm
			421-450	4.50mm
			421-475	4.75mm
			421-500	5.00mm
		0.6mm	423-350	3.50mm
			423-375	3.75mm
			423-400	4.00mm
	Standard	0.6mm	423-425	4.25mm
			423-450	4.50mm
			423-475	4.75mm
			423-500	5.00mm
		0.8mm	425-400	4.00mm
			425-425	4.25mm
			425-450	4.50mm
			425-500	5.00mm



Bartels Bucket Handle

Material	Type	Shaft Dia.	Ref. #	Length
Titanium	Adjustable Well	0.4mm	427-350	3.50mm
			427-375	3.75mm
			427-400	4.00mm
			427-425	4.25mm
			427-450	4.50mm
			427-475	4.75mm
			427-500	5.00mm
			0.6mm	
426-375	3.75mm			
426-400	4.00mm			
426-425	4.25mm			
426-450	4.50mm			
426-475	4.75mm			
426-500	5.00mm			
*Offset		428-400	4.00mm	
		428-450	4.50mm	
		428-500	5.00mm	

Designed in conjunction with Loren Bartels, MD, Tampa, FL

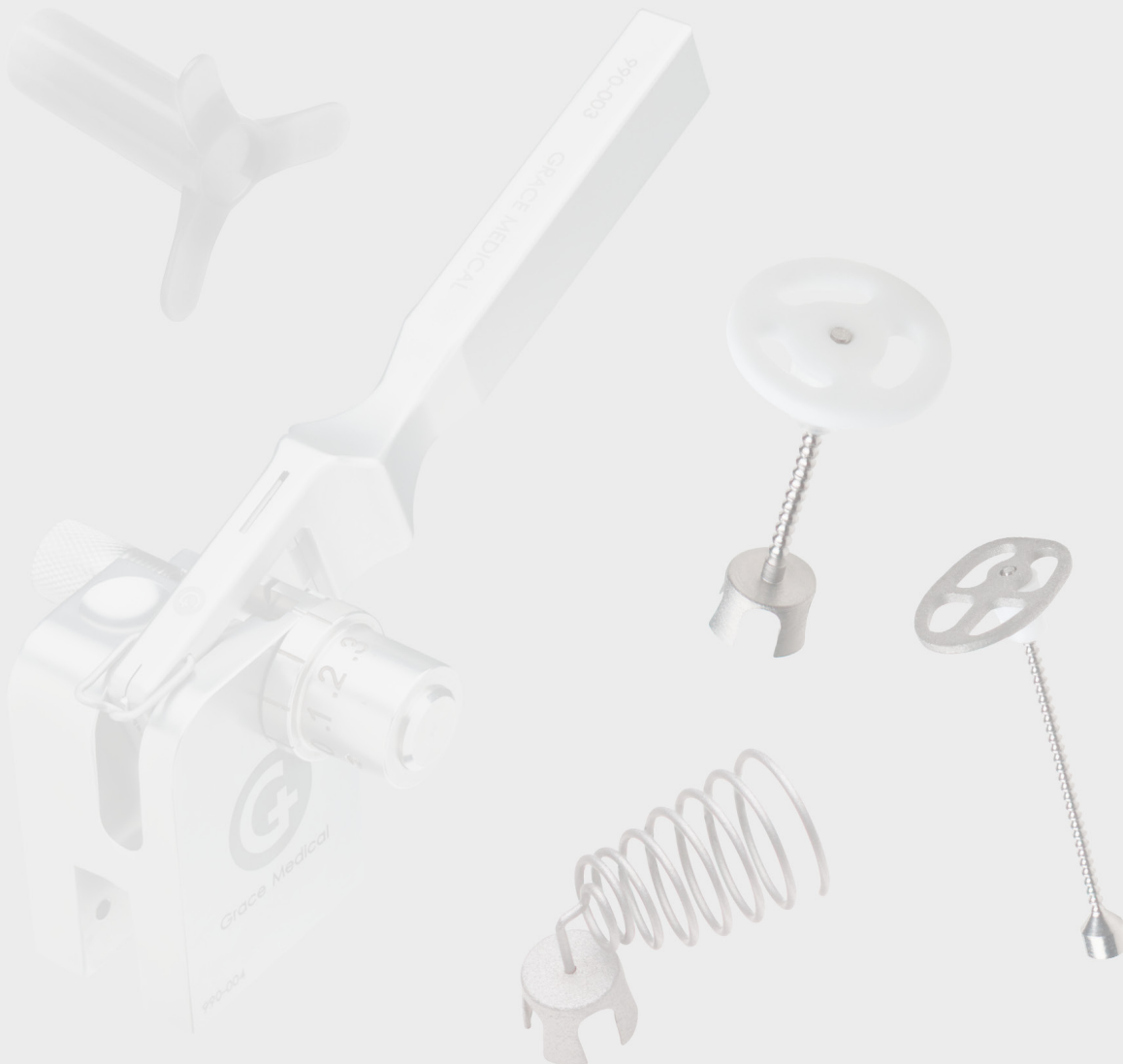


Grace Bucket Handle Offset

Material	Type	Shaft Dia.	Ref. #	Length
Titanium/Ni	Notched	0.4mm	430-400	4.00mm
			430-425	4.25mm
			430-450	4.50mm
			430-475	4.75mm
			430-500	5.00mm
			430-550	5.50mm
			430-600	6.00mm



Ventilation Tubes and Myringotomy Accessories



Ventilation Tubes

Armstrong R

IF Distance	O.D. Flange	Ref. #	Material	Lumen	Pkg.
1.00mm	2.70mm	520-191	Fluoroplastic	1.14mm	5/Bx
		520-192	Fluoroplastic	1.14mm	10/Bx
		520-193	Fluoroplastic	1.14mm	30/Bx
		520-196	Fluoroplastic	1.14mm	60/Bx
		525-191	Blue Fluoroplastic	1.14mm	5/Bx
		525-192	Blue Fluoroplastic	1.14mm	10/Bx
		525-193	Blue Fluoroplastic	1.14mm	30/Bx
0.70mm	2.54mm x 3.81mm	*510-281	Silicone	1.14mm	5/Bx
		*510-281C	PC Silicone	1.14mm	5/Bx
		*510-282	Silicone	1.14mm	10/Bx
		*510-286C	PC Silicone	1.14mm	60/Bx
		510-311	Silicone	1.14mm	5/Bx
		510-312	Silicone	1.14mm	10/Bx

*with tab



Armstrong Beveled Straight

Length	O.D. Flange	Ref. #	Material	Lumen	Pkg.
8.00mm	2.79mm	520-141	Fluoroplastic	1.14mm	5/Bx
		520-142	Fluoroplastic	1.14mm	10/Bx



Bobbin

IF Distance	O.D. Flange	Ref. #	Material	Lumen	Pkg.
1.00mm	2.70mm	500-001	Blue Titanium	1.02mm	5/Bx
		500-002	Blue Titanium	1.02mm	10/Bx
		500-011	Blue Titanium	1.14mm	5/Bx
		500-012	Blue Titanium	1.14mm	10/Bx
		500-021	Blue Titanium	1.27mm	5/Bx
		500-022	Blue Titanium	1.27mm	10/Bx
		500-026	Blue Titanium	1.27mm	60/Bx
		*500-021M	Gold Titanium	1.27mm	5/Bx
		520-021	Fluoroplastic	1.02mm	5/Bx
		520-022	Fluoroplastic	1.02mm	10/Bx
		520-026	Fluoroplastic	1.02mm	60/Bx
		520-001	Fluoroplastic	1.14mm	5/Bx
		520-002	Fluoroplastic	1.14mm	10/Bx
		520-003	Fluoroplastic	1.14mm	30/Bx
		525-021	Blue Flpl	1.02mm	5/Bx
		525-001	Blue Flpl	1.14mm	5/Bx



*Designed in conjunction with Rande Lazar, MD, Memphis, TN

Baxter Beveled Bobbin

IF Distance	O.D. Flange	Ref. #	Material	Lumen	Pkg.
Tapered	2.30mm	520-211	Fluoroplastic	0.97mm	5/Bx
		520-212	Fluoroplastic	0.97mm	10/Bx
	3.00mm	520-221	Fluoroplastic	1.27mm	5/Bx
		520-222	Fluoroplastic	1.27mm	10/Bx



Beveled Bobbin

IF Distance	O.D. Flange (mm)	Ref. #	Material	Lumen	Pkg.
0.71mm	(a)3.15 (b)2.79	525-171	Blue Flpl	1.14mm	5/Bx



Pediatric Bobbin

IF Distance	O.D. Flange (mm)	Ref. #	Material	Lumen	Pkg.
1.00mm	(a)2.00 (b)1.50	500-061	Blue Titanium	0.78mm	5/Bx
		500-062	Blue Titanium	0.78mm	10/Bx



Sheehy Collar Button

IF Distance	O.D. Flange	Ref. #	Material	Lumen	Pkg.
1.50mm	3.00mm	520-011	Fluoroplastic	1.27mm	5/Bx
		520-012	Fluoroplastic	1.27mm	10/Bx
		520-013	Fluoroplastic	1.27mm	30/Bx
		520-016	Fluoroplastic	1.27mm	60/Bx
		525-011	Blue Flpl	1.27mm	5/Bx
		525-012	Blue Flpl	1.27mm	10/Bx
		525-016	Blue Flpl	1.27mm	60/Bx
		510-131	Silicone	1.27mm	5/Bx
2.75mm	3.00mm	510-131C	PC Silicone	1.27mm	5/Bx
		510-132	Silicone	1.27mm	10/Bx
		510-132C	PC Silicone	1.27mm	10/Bx
		510-133	Silicone	1.27mm	30/Bx
		510-133C	PC Silicone	1.27mm	30/Bx
		510-136	Silicone	1.27mm	60/Bx
		510-136C	PC Silicone	1.27mm	60/Bx



Donaldson

IF Distance	O.D. Flange	Ref. #	Material	Lumen	Pkg.
0.76mm	2.30mm	520-051	Fluoroplastic	1.14mm	5/Bx
		520-052	Fluoroplastic	1.14mm	10/Bx
		*510-001	Silicone	1.14mm	5/Bx
		*510-001C	PC Silicone	1.14mm	5/Bx
		*510-002	Silicone	1.14mm	10/Bx
		*510-003	Silicone	1.14mm	30/Bx
		510-011	Silicone	1.14mm	5/Bx
		510-011C	PC Silicone	1.14mm	5/Bx
		510-012	Silicone	1.14mm	10/Bx
		510-016	Silicone	1.14mm	60/Bx

*with tab



Mini-Reversible

IF Distance	O.D. Flange (mm)	Ref. #	Material	Lumen	Pkg.
1.00mm	(a)2.00 (b)1.70	510-151	Silicone	0.89mm	5/Bx
		510-152	Silicone	0.89mm	10/Bx



Moretz

IF Distance	O.D. Flange (mm)	Ref. #	Material	Lumen	Pkg.
1.00mm	0.86mm	500-121	Blue Titanium	0.76mm	5/Bx
	2.70mm	500-131	Blue Titanium	1.27mm	5/Bx
	2.70mm	500-132	Blue Titanium	1.27mm	10/Bx



Paparella

IF Distance	O.D. Flange (mm)	Ref. #	Material	Lumen	Pkg.
1.00mm	(a)2.44 (b)2.16	*510-041	Silicone	1.02mm	5/Bx
		*510-041C	PC Silicone	1.02mm	5/Bx
		*510-042	Silicone	1.02mm	10/Bx
		*510-042C	PC Silicone	1.02mm	10/Bx
		*510-043	Silicone	1.02mm	30/Bx
		*510-043C	PC Silicone	1.02mm	30/Bx
		*510-046	Silicone	1.02mm	60/Bx
		*510-046C	PC Silicone	1.02mm	60/Bx
		510-051	Silicone	1.02mm	5/Bx
		510-051C	PC Silicone	1.02mm	5/Bx
		510-052	Silicone	1.02mm	10/Bx
		510-053	Silicone	1.02mm	30/Bx
		510-053C	PC Silicone	1.02mm	30/Bx
		510-056	Silicone	1.02mm	60/Bx
		*510-061	Silicone	1.14mm	5/Bx
		*510-061C	PC Silicone	1.14mm	5/Bx
		*510-062	Silicone	1.14mm	10/Bx
(a)4.14 (b)3.00		*510-071	Silicone	1.27mm	5/Bx
		*510-072	Silicone	1.27mm	10/Bx
		510-211C	PC Silicone	1.27mm	5/Bx
		510-212C	PC Silicone	1.27mm	10/Bx
		510-213C	PC Silicone	1.27mm	30/Bx
(a)4.23 (b)3.20		*510-081	Silicone	1.52mm	5/Bx
		*510-082	Silicone	1.52mm	10/Bx
(a)4.57 (b)3.50		*510-091	Silicone	2.03mm	5/Bx
		*510-092	Silicone	2.03mm	10/Bx
(a)2.64 (b)2.13		*520-131	Fluoroplastic	1.02mm	5/Bx
		*520-132	Fluoroplastic	1.02mm	10/Bx

*with tab



Pope

IF Distance	O.D. Flange (mm)	Ref. #	Material	Lumen	Pkg.
1.00mm	2.50 x 3.50	510-161	Silicone	1.14mm	5/Bx
		510-161C	PC Silicone	1.14mm	5/Bx
		510-162	Silicone	1.14mm	10/Bx
1.10mm	2.60 x 2.60	530-001	Polyethylene	1.14mm	5/Bx
		530-003	Polyethylene	1.14mm	30/Bx



Razrbac

Length	O.D. Flange	Ref. #	Material	Lumen	Pkg.
4.00mm	1.80mm	500-110	Blue Titanium	1.14mm	5/Bx

Designed in conjunction with John Dornhoffer, MD, Little Rock, AR



Reuter Bobbin

IF Distance	O.D. Flange	Ref. #	Material	Lumen	Pkg.
1.01mm	2.70mm	*500-101	Blue Titanium	1.14mm	5/Bx
0.86mm	2.79mm	525-161	Blue Flpl	1.00mm	5/Bx
		525-162	Blue Flpl	1.00mm	10/Bx
0.93mm	2.80mm	*520-181	Fluoroplastic	1.14mm	5/Bx
		*520-182	Fluoroplastic	1.14mm	10/Bx
		*520-186	Fluoroplastic	1.14mm	60/Bx

*with holes



Rube

IF Distance	Flange Length	Ref. #	Material	Lumen	Pkg.
1.00mm	6.60mm	510-181	Silicone	1.14mm	5/Bx
		510-181C	PC Silicone	1.14mm	5/Bx
		510-191	Silicone	1.27mm	5/Bx



Shea Parasol

IF Distance	O.D. Flange	Ref. #	Material	Lumen	Pkg.
0.81mm	1.47mm	*510-261	Silicone	1.02mm	5/Bx
		*510-262	Silicone	1.02mm	10/Bx

*with tab



Simon Hannah Bobbin

IF Distance	O.D. Flange	Ref. #	Material	Lumen	Pkg.
0.78mm	2.54mm	500-081	Gold Titanium	1.14mm	5/Bx
		500-082	Gold Titanium	1.14mm	10/Bx

Designed in conjunction with Louis Chanin, MD, Memphis, TN



Shepard Grommet

IF Distance	O.D. Flange	Ref. #	Material	Lumen	Pkg.
1.60mm	2.30mm	*510-021	Silicone	1.02mm	5/Bx
		*510-021C	PC Silicone	1.02mm	5/Bx
		*510-022	Silicone	1.02mm	10/Bx
		*510-031	Silicone	1.14mm	5/Bx
		*510-032	Silicone	1.14mm	10/Bx
		510-231	Silicone	1.02mm	5/Bx
		*520-031	Fluoroplastic	1.02mm	5/Bx
		*520-032	Fluoroplastic	1.02mm	10/Bx
		*520-041	Fluoroplastic	1.14mm	5/Bx
		*520-042	Fluoroplastic	1.14mm	10/Bx
		*525-041	Blue Flpl	1.14mm	5/Bx
		*525-043	Blue Flpl	1.14mm	30/Bx
		520-111	Fluoroplastic	1.02mm	5/Bx
		520-112	Fluoroplastic	1.02mm	10/Bx
		520-113	Fluoroplastic	1.02mm	30/Bx
		520-116	Fluoroplastic	1.02mm	60/Bx
		525-111	Blue Flpl	1.02mm	5/Bx
		525-111W	Blue Flpl (w/wire)	1.02mm	5/Bx
		525-113	Blue Flpl	1.02mm	30/Bx
		525-116W	Blue Flpl (w/ wire)	1.02mm	60/Bx
		520-121	Fluoroplastic	1.14mm	5/Bx
		520-122	Fluoroplastic	1.14mm	10/Bx
		525-121	Blue Flpl	1.14mm	5/Bx
		525-121W	Blue Flpl (w/wire)	1.14mm	5/Bx
		525-123	Blue Flpl	1.14mm	30/Bx
		525-123W	Blue Flpl (w/wire)	1.14mm	30/Bx
		525-126	Blue Flpl	1.14mm	60/Bx
		525-126W	Blue Flpl (w/wire)	1.14mm	60/Bx

*with tab



Spoon Bobbin

IF Distance	O.D. Flange (mm)	Ref. #	Material	Lumen	Pkg.
1.00mm	(a)3.45 (b)2.60	500-031	Blue Titanium	1.02mm	5/Bx
		500-032	Blue Titanium	1.02mm	10/Bx
		500-041	Blue Titanium	1.14mm	5/Bx
		500-042	Blue Titanium	1.14mm	10/Bx
		500-051	Blue Titanium	1.27mm	5/Bx
		500-052	Blue Titanium	1.27mm	10/Bx



Straight

Flange OD	Length	Ref. #	Material	Lumen	Pkg.
2.30mm	7.00mm	520-061	Fluoroplastic	0.9mm	5/Bx
	7.00mm	520-062	Fluoroplastic	0.9mm	10/Bx
	12.00mm	520-071	Fluoroplastic	0.9mm	5/Bx
	12.00mm	520-072	Fluoroplastic	0.9mm	10/Bx
	7.00mm	520-081	Fluoroplastic	1.14mm	5/Bx
	7.00mm	520-082	Fluoroplastic	1.14mm	10/Bx
	12.00mm	520-091	Fluoroplastic	1.14mm	5/Bx
	12.00mm	520-092	Fluoroplastic	1.14mm	10/Bx



T-Tube

Length	Flange Length	Ref. #	Material	Lumen	Pkg.
12.00mm	9.80mm	510-101	Silicone	1.14mm	5/Bx
		510-101C	PC Silicone	1.14mm	5/Bx
		510-102	Silicone	1.14mm	10/Bx



Modified T-Tube

Length	Flange Length	Ref. #	Material	Lumen	Pkg.
6.00mm	7.60mm	510-111	Silicone	1.27mm	5/Bx
		510-111C	PC Silicone	1.27mm	5/Bx
		510-112	Silicone	1.27mm	10/Bx



Tapervent

IF Distance	O.D. Flange (mm)	Ref. #	Material	Lumen	Pkg.
1.17mm	(a)4.20 (b)2.54	510-141	Silicone	1.14mm	5/Bx
		510-141C	PC Silicone	1.14mm	5/Bx
		510-142	Silicone	1.14mm	10/Bx
	(a)4.50 (b)2.72	510-171	Silicone	1.27mm	5/Bx
		510-171C	PC Silicone	1.27mm	5/Bx
		510-172	Silicone	1.27mm	10/Bx
		510-173	Silicone	1.27mm	30/Bx



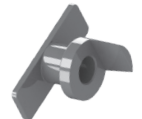
Tiny Tef

IF Distance	O.D. Flange (mm)	Ref. #	Material	Lumen	Pkg.
1.00mm	(a)2.00 (b)1.50	520-151	Fluoroplastic	0.76mm	5/Bx
		520-152	Fluoroplastic	0.76mm	10/Bx



Touma

IF Distance	Flange Length	Ref. #	Material	Lumen	Pkg.
1.10mm	4.80mm	510-501	Silicone	1.10mm	5/Bx



Triune

Length	Flange Length	Ref. #	Material	Lumen	Pkg.
5.00mm	2.00mm	510-121	Silicone	1.35mm	5/Bx
		510-121C	PC Silicone	1.35mm	5/Bx
		510-122	Silicone	1.35mm	10/Bx
		510-123	Silicone	1.35mm	30/Bx



Designed in conjunction with Frank Hill, MD, Columbia, SC

Tiny Triune

Length	Flange Length	Ref. #	Material	Lumen	Pkg.
3.81mm	1.60mm	510-251	Silicone	0.76mm	5/Bx
		510-251C	PC Silicone	0.76mm	5/Bx
		510-252	Silicone	0.76mm	10/Bx



Designed in conjunction with Frank Hill, MD, Columbia, SC
Suggested by Dennis Bojrab, MD, Farmington Hills, MI

Triune Trumpet

Length	Flange Length	Ref. #	Material	Lumen	Pkg.
2.45mm	2.35mm	510-301	Silicone	1.27mm	5/Bx
		510-302	Silicone	1.27mm	10/Bx



Designed in conjunction with Frank Hill, MD, Columbia, SC

Tympanoplasty Knives and Blades

Ref. # 930-011	<i>Angled 60 degrees, 2.5mm wide, blade only*</i>
----------------	---



Ref. # 930-022	<i>Straight, 2.5mm wide, blade only*</i>
----------------	--



Flat Stock Knives and Blades - Myringotomy

Ref. # 930-001	<i>Lance - adult size, angled with round handle</i>
----------------	---



Ref. # 930-002	<i>Lance - juvenile size, angled with round handle</i>
----------------	--



Ref. # 930-003	<i>Spear - juvenile size, angled with round handle</i>
----------------	--



Ref. # 930-008	<i>Lance - adult size, angled - blade only*</i>
----------------	---



Ref. # 930-009	<i>Lance - juvenile size, angled, blade only*</i>
----------------	---



Ref. # 930-010	<i>Spear - juvenile size, angled - blade only*</i>
----------------	--



Ref. # 930-020	<i>Sickle flat blade with flat handle</i>
----------------	---



Ref. # 930-021	<i>Lance flat blade with flat handle</i>
----------------	--



Round Stock Knives and Blades - Myringotomy

Ref. # 930-006	<i>Spear - straight with handle</i>
----------------	-------------------------------------



Ref. # 930-004	<i>Lance - juvenile size, straight with handle</i>
----------------	--



Ref. # 930-007	<i>Sickle - straight with handle</i>
----------------	--------------------------------------



Ref. # 930-014	<i>Tapered - straight edge, upward cut, blade only***</i>
----------------	---



Ref. # 930-015	<i>Tapered - straight edge, downward cut, blade only***</i>
----------------	---



Ref. # 930-016	<i>Spear - angled - blade only***</i>
----------------	---------------------------------------



Ref. # 930-012	<i>Spear - straight round blade - blade only***</i>
----------------	---



Handles

Ref. # 930-017	<i>*handle, 10cm</i>
----------------	----------------------



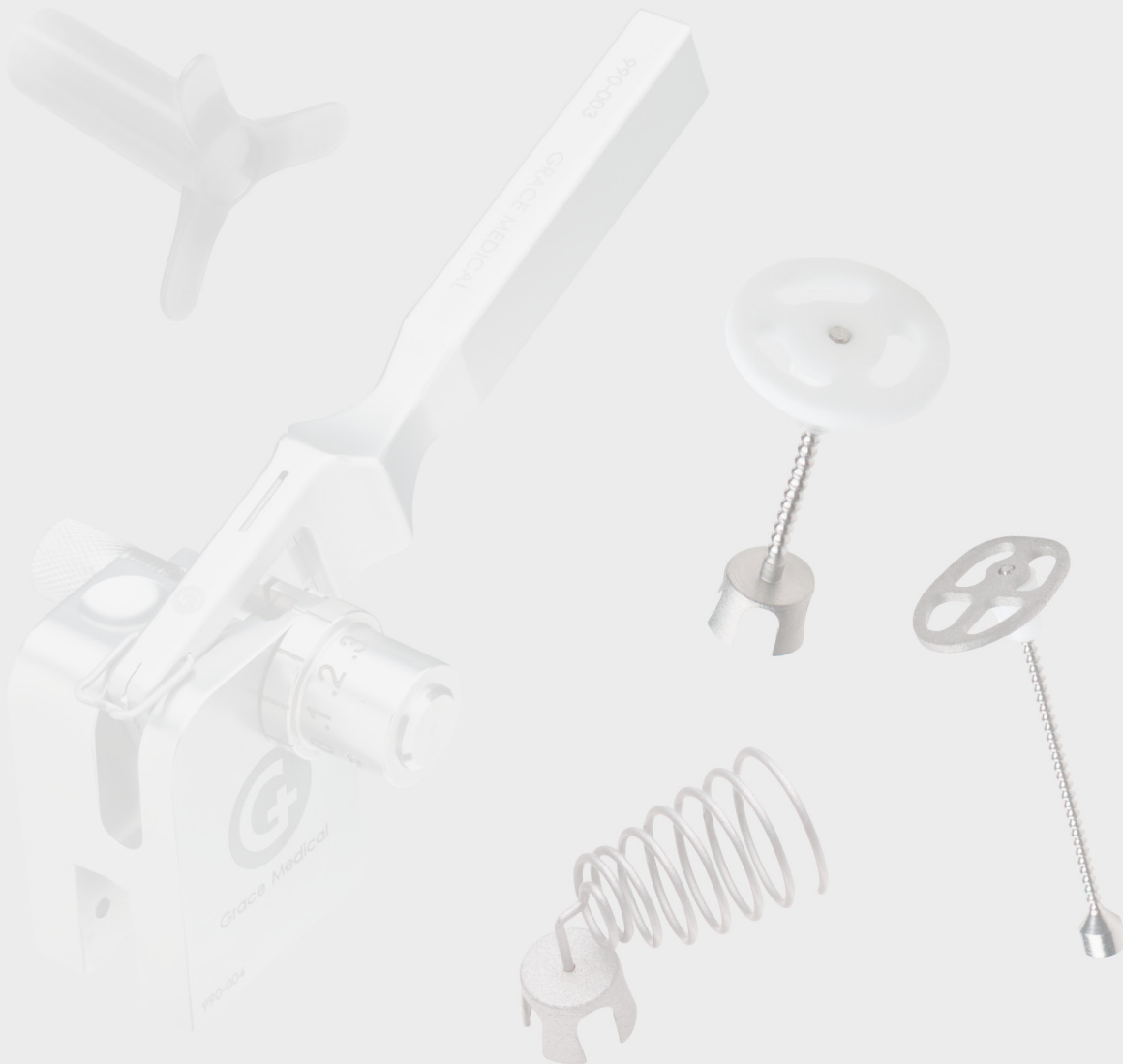
Ref. # 930-018	<i>**handle, 10cm</i>
----------------	-----------------------



Ref. # 930-019	<i>***handle, 10cm</i>
----------------	------------------------



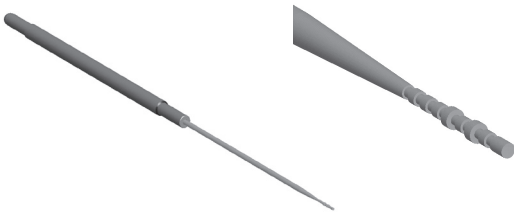
Specialty Products



Specialty Products

Malleable Measuring Rod

Ref. #	Material	Length
915	Titanium	18.40cm



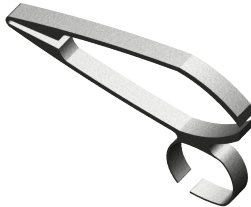
Sliding Measuring Rod

Ref. #	Material	Length
905	Stainless Steel & Aluminum	19.50cm



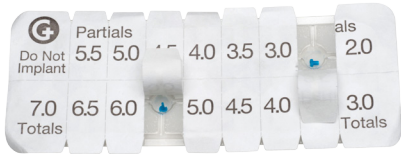
ALTO Cutter

Ref. #	Material	Length	Jaw Width
910	Stainless Steel	7.90cm	6.30mm



Disposable Sizer Tray

Ref. #	Pkg.
966	10/Bx



Accutip

Ref. #	Description
926-001	Accutip Handle, Single Battery
926-002	Accutip and Drape (5/bx)



FeatherVac

Ref. #	Description
906-001	FeatherVac Reusable Suction
906-002	FeatherVac Disposable Stapes Seat (5/bx)

Designed in conjunction with Robert F. Labadie, MD, PhD, FACS, Vanderbilt University, Nashville, TN



Cartilage Microtome

Ref. #	Description
990-001	Cartilage Microtome
990-002	Cartilage Microtome Blades (6/bx)



McMenomey Reverse Alligator Forceps

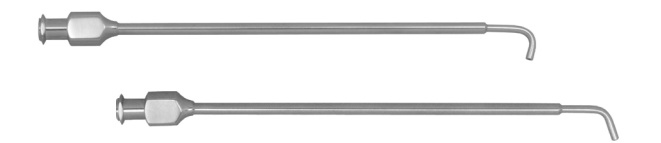
Ref #	Description
908	Reverse Jaw Action, Delicate, Straight, Serrated, 0.8mm x 4.0mm

Designed in conjunction with Sean McMenomey, MD, New York, NY

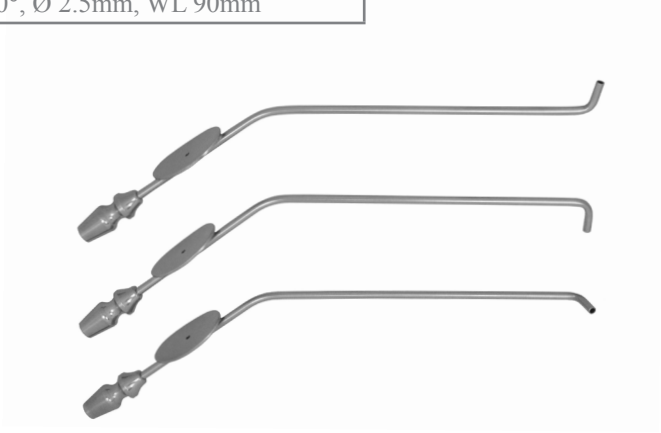


Weiss Instruments for Balloon Sinuplasty

Ref. #	Description
049107FX	Injection Cannula by WEISS, for frontal sinus, 70°, WL 110mm
049110FX	Injection Cannula by WEISS, for frontal sinus, 110°, WL 110mm



Ref. #	Description
049650FX	Suction Cannula by WEISS, for right maxillary sinus, 90°, Ø 2.5mm, WL 90mm
049651FX	Suction Cannula by WEISS, for left maxillary sinus 90°, Ø 2.5mm, WL 90mm
049652FX	Suction Cannula by WEISS, for frontal sinus 70°, Ø 2.5mm, WL 90mm



Ref. #	Description
215215FX	Elevator/Retractor by WEISS, double-ended, straight blunt and 90° curved blunt, L 200mm



Designed in conjunction with Ray Weiss, MD, Biloxi, MS

Bojrab Tympanoplasty Dissector Set

Ref. #	Description
999-001	House-Crabtree Dissector, Small, Angled 90°, 0.5mm x 1.5mm, Length 165mm
999-002	House-Crabtree Dissector, Medium, Angled 90°, 0.5mm x 2.5mm, Length 165mm
999-003	House-Crabtree Dissector, Large, Angled 90°, 0.5mm x 3.5mm, Length 165mm
999-004	Bojrab Dissector, Small, Angled 20°, 0.55mm x 2.0mm, Length 165mm
999-005	Bojrab Dissector, Medium, Angled 20°, 1.1mm x 2.0mm, Length 165mm
999-006	Bojrab Dissector, Large, Angled 20°, 2.2mm x 2.0mm, Length 165mm
999-007	Bojrab Dissection Needle, Angled 20°, 2.0mm, Length 165mm

Designed in conjunction with Dennis Bojrab, MD, Farmington Hills, MI



Fuse Cement

Ref. #	Description
985-001	Fuse Otologic Cement Capsule 1 gram
985-002	Fuse Cement Applicator
985-003	Fuse Cement Amalgamator

*May not be available in all countries



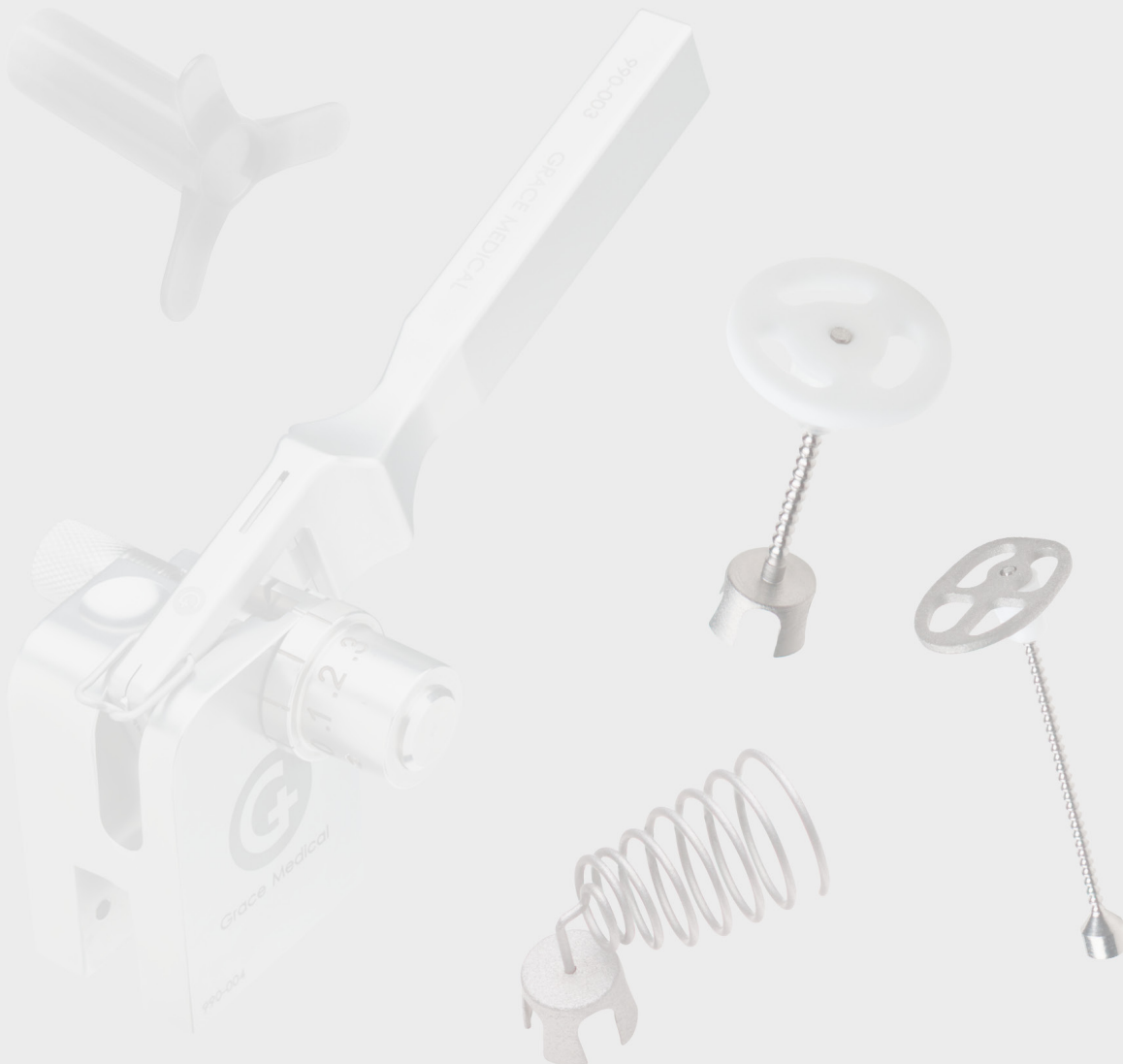
Larynx Advanced Retractor System (LARS) for TransOral Robotic Surgery

Ref. #	Description
118925FX	Rail Clamping Base for LARS
118926FX	L-Column for LARS, 450mm x 100mm
118927FX	Standard Laryngoscope Adaptor for LARS
118940FX	Articulating Support System for LARS, 400mm
540507FX	Larynx Advanced Retractor System (LARS)
540509FX	Cheek Retractor, WL 9cm, Pair
540512FX	Cheek Holders for Cheek Retractors, Pair
540513FX	Tongue Blade, Strongly Curved, TL 16cm
540514FX	Mandibular Blade, TL 14cm
540516FX	Tongue Blade, Curved w/ Right Aperture, TL 18cm
540517FX	Tongue Blade, Curved w/ Left Aperture, TL 18cm
540519FX	Laryngeal Blade, Concave, Slightly Curved, WL 15cm, TL 25cm
540520FX	Laryngeal Blade, Concave, Slightly Curved, WL 17cm, TL 26.5cm
540521FX	Diverticuloscope Blade, Concave, Slightly Curved, WL 22cm, TL 31cm
540522FX	Special Blade with Stop Button, WL 15cm

Designed in conjunction with Marc Remacle, MD, PhD and
Georges Lawson, MD, Louvain University Hospital of Mont-Godinne, Yvoir, Belgium



Surgical Instruments



Surgical Instruments

MICRO EAR SCISSORS by BELLUCCI

178100FX	Delicate, Straight, Blades 4.0mm
178200FX	Delicate, Straight, Blades 3.0mm



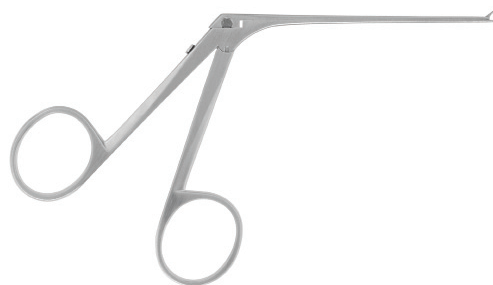
MICRO EAR SCISSORS by SHEA-BELLUCCI

178300FX	Straight, Blades 8.0mm
-----------------	------------------------



MICRO EAR CUP FORCEPS

179700FX	Very Delicate, Straight, Cups 0.6mm x 1.0mm
179701FX	Very Delicate, Curved Left, Cups 0.6mm x 1.0mm
179702FX	Very Delicate, Curved Right, Cups 0.6mm x 1.0mm



MICRO EAR FORCEPS by HARTMANN

- | | |
|-----------------|--|
| 180600FX | Delicate, Straight, Serrated, Blades 0.8mm x 4.0mm |
| 180610FX | Delicate, Straight, Smooth, Blades 0.8mm x 4.0mm |



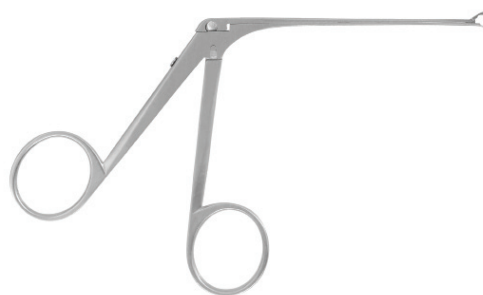
MALLEUS NIPPER by DIETER

- | | |
|-----------------|-------------------------------------|
| 183103FX | Small, Upbiting, Jaws 1.5mm x 2.0mm |
|-----------------|-------------------------------------|



WIRE CRIMPER by MCGEE

- | | |
|-----------------|-------------------------------------|
| 185100FX | Curved Downward, Jaws 0.8mm x 3.5mm |
|-----------------|-------------------------------------|



HALSTEAD MOSQUITO ARTERY FORCEPS

084612FX Curved, Length 125mm



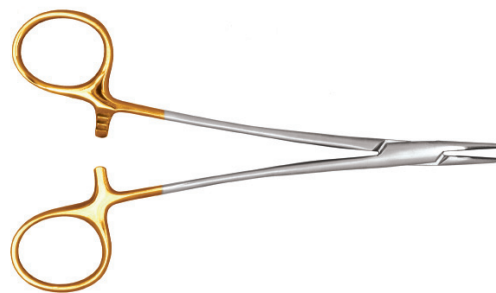
OPERATING SCISSORS by MAYO

112114FX Straight, Length 140mm



NEEDLE HOLDER by CRILE-WOOD

113115FX Straight, Tungsten Carbide, Length 150mm



GELFOAM PRESSURE FORCEPS by HOUSE

164600FX Large Platform 11.0mm x 14.0mm, Length 180mm



EAR DRESSING FORCEPS by JANSEN

032416FX Bayonet, Length 160mm

EAR DRESSING FORCEPS by GRUENWALD

032419FX Bayonet, Length 190mm



TISSUE FORCEPS by ADSON-BROWN

325112FX 7 x 7 Teeth, Length 120mm

TISSUE FORCEPS by ADSON

325312FX Delicate, 1 x 2 Teeth, Length 120mm



SUCTION TUBE by BARON

034903FX 3.0 Fr.

034905FX 5.0 Fr.

034907FX 7.0 Fr.



PRECISE SUCTION / IRRIGATOR

168703FX	3.0 Fr. / 3.6 Fr., Tapered, Teardrop Control, Fenestrated
168705FX	5.0 Fr. / 5.0 Fr., Tapered, Teardrop Control, Fenestrated
168707FX	7.0 Fr. / 5.0 Fr., Tapered, Teardrop Control, Fenestrated
168710FX	10.0 Fr. / 5.0 Fr., Tapered, Teardrop Control
168712FX	12.0 Fr. / 6.0 Fr., Tapered, Teardrop Control
168714FX	14.0 Fr. / 7.5 Fr., Tapered, Teardrop Control



RETRACTOR by WEITLANDER

100313FX	Sharp, 3 x 4 Prongs, Length 130mm
100316FX	Sharp, 3 x 4 Prongs, Length 160mm



RETRACTOR by SENN-MILLER

464100FX	3 Sharp Prongs / Blunt Blade, Length 160mm
-----------------	--



VIENNA NASAL SPECULUM

464100FX	Blade Length 29.5mm, Length 140mm
-----------------	-----------------------------------



EAR SPECULUM by HARTMANN

018100FX	Inner Diameter 1.8mm, Chrome Finish
018101FX	Inner Diameter 3.2mm, Chrome Finish
018102FX	Inner Diameter 4.0mm, Chrome Finish
018103FX	Inner Diameter 6.0mm, Chrome Finish
018104FX	Inner Diameter 6.5mm, Chrome Finish



EAR SPECULUM by HARTMANN

018401FX	Inner Diameter 3.0mm, Black Finish
018402FX	Inner Diameter 4.0mm, Black Finish
018403FX	Inner Diameter 5.0mm, Black Finish
018404FX	Inner Diameter 7.0mm, Black Finish



EAR SPECULUM by FARRIOR

116101FX	Inner Diameter 4.5mm, Chrome Finish
116102FX	Inner Diameter 5.5mm, Chrome Finish
116103FX	Inner Diameter 6.5mm, Chrome Finish
116104FX	Inner Diameter 7.5mm, Chrome Finish
116105FX	Inner Diameter 8.5mm, Chrome Finish
116106FX	Inner Diameter 9.5mm, Chrome Finish
116107FX	Inner Diameter 10.5mm, Chrome Finish



EAR SPECULUM by FARRIOR

116311FX	Oval, Inner Diameter 4.2mm x 4.6mm, Black Finish
116312FX	Oval, Inner Diameter 5.2mm x 5.8mm, Black Finish
116313FX	Oval, Inner Diameter 5.9mm x 6.8mm, Black Finish
116314FX	Oval, Inner Diameter 7.0mm x 8.0mm, Black Finish
116315FX	Oval, Inner Diameter 8.0mm x 9.2mm, Black Finish
116316FX	Oval, Inner Diameter 8.8mm x 10.0mm, Black Finish
116317FX	Oval, Inner Diameter 9.5mm x 10.8mm, Black Finish



HOOK by JOSEPH

316610FX 2 Prongs, Sharp, Width 10.0mm, Length 160mm



EAR LOOP by BILLEAU

023101FX Straight, Oval 3.5mm x 5.0mm, Length 165mm



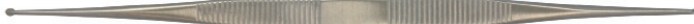
EAR CURETTE by BUCK

- 025120FX** Blunt, Outer Diameter 1.5mm, Length 150mm
- 025110FX** Blunt, Outer Diameter 2.0mm, Length 150mm
- 025101FX** Blunt, Outer Diameter 2.5mm, Length 150mm
- 025102FX** Blunt, Outer Diameter 3.2mm, Length 150mm
- 025103FX** Blunt, Outer Diameter 4.0mm, Length 150mm



CURETTE by HOUSE

172700FX Double-Ended, Ovals 1.0mm / 1.2mm, Length 170mm



EXCAVATOR by AUSTIN

- 160536FX** Right, Length 165mm
- 160537FX** Left, Length 165mm



ELEVATOR by HOUSE

105900FX Angled 15°, 1.0mm X 12.0mm, Length 160mm



ELEVATOR by FREER

215100FX Sharp / Blunt, Width 4.5mm, Length 200mm



DISSECTOR by HOUSE-CRABTREE

106025FX Angled 90°, 0.5mm X 2.5mm, Length 160mm



ROUND KNIFE by ROSEN

150107FX Angled 45°, Diameter 1.0mm, Length 165mm

150105FX Angled 45°, Diameter 1.5mm, Length 165mm

150103FX Angled 45°, Diameter 2.0mm, Length 165mm

150101FX Angled 45°, Diameter 2.5mm, Length 165mm



LANCET KNIFE by ROSEN

151100FX Angled 45°, 2.0mm x 3.5mm, Length 165mm



SICKLE KNIFE by PLESTER

153800FX Curved, 1.3mm x 6.5mm, Length 165mm



SICKLE KNIFE by DORNHOFFER

153900FX Curved, 1.0mm x 4.0mm, Length 165mm



NEEDLE by WULLSTEIN

- 154100FX Straight, Sharp Tip, Length 165mm
- 154300FX Curved Long, Sharp Tip, Length 165mm
- 154500FX Curved Short, Sharp Tip, Length 165mm
- 154700FX Curved Slightly, Sharp Tip, Length 165mm



MICRO PICK

- 155102FX Angled 90°, Tip 0.2mm, Length 165mm
- 155105FX Angled 90°, Tip 0.5mm, Length 165mm
- 155110FX Angled 90°, Tip 1.0mm, Length 165mm
- 155115FX Angled 90°, Tip 1.5mm, Length 165mm



STAPES MICROSURGICAL GAUGE

170000FX Sliding Mechanism, Scale Range 0.0mm - 9.0mm



HAND DRILL

162700FX Diamond Burr, Diameter 0.7mm, Length 160mm



PERFORATOR by FISCH

163203FX Tip Diameter 0.3mm, Length 165mm

163204FX Tip Diameter 0.4mm, Length 165mm

163205FX Tip Diameter 0.5mm, Length 165mm

163206FX Tip Diameter 0.6mm, Length 165mm



TEFLON CUTTING BLOCK

169710FX Diameter 60mm, Thickness 10mm



STERILIZATION TRAYS

995-001 Base Module, Tray and Lid, Silver, 10in x 20in x 4in

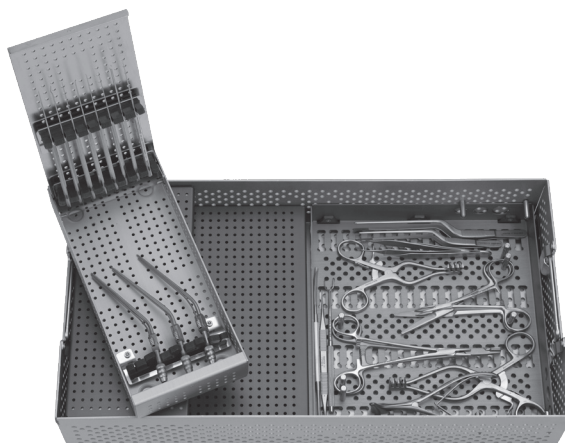
995-002 Half Module, Tray, Orange, 10in x 10in x 1.5in

995-003 Half Module, Tray and Lid, Purple, Holds 10 Alligator Forceps, 10in x 10in x 2in

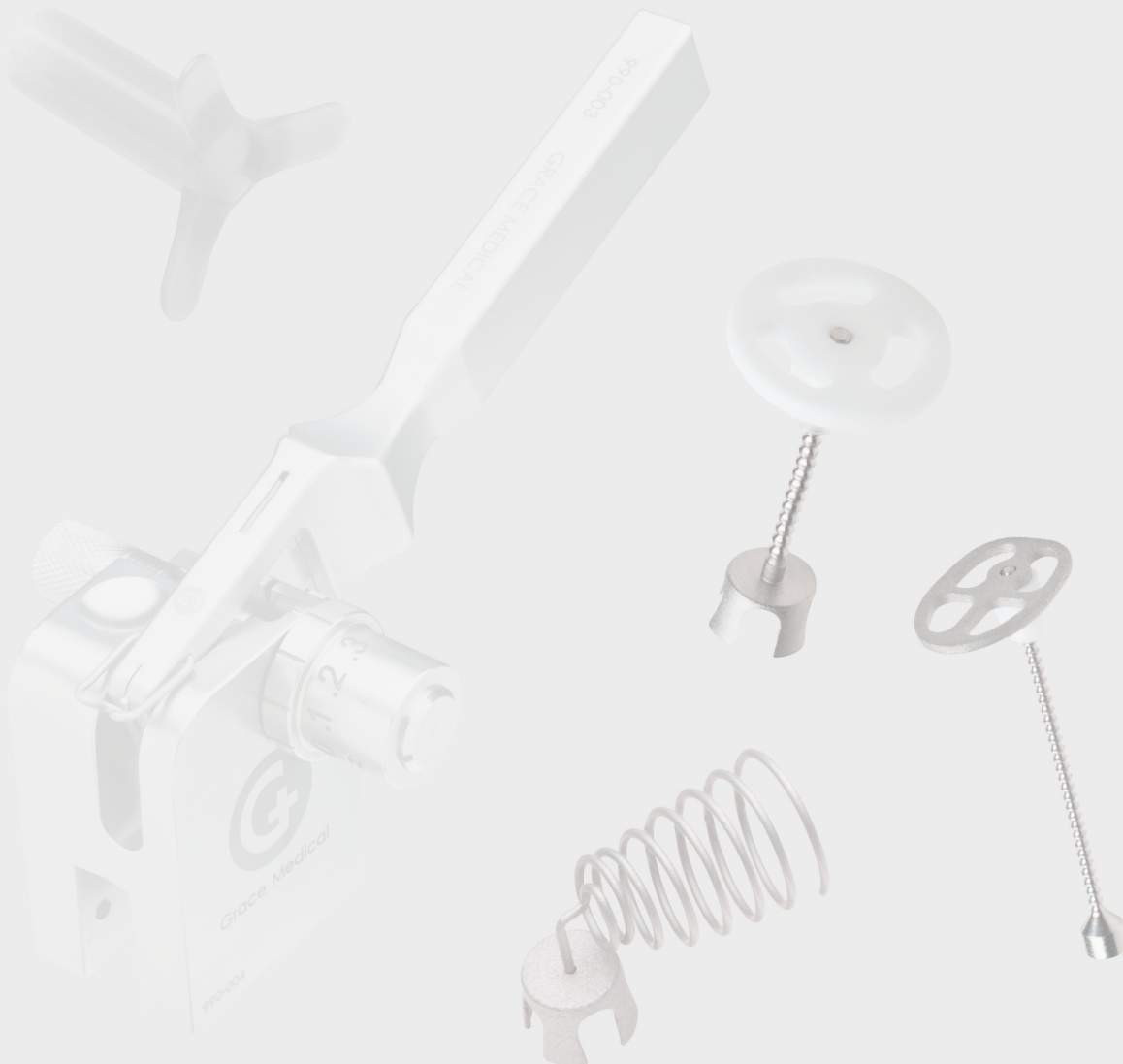
995-004 Quarter Module, Tray and Lid, Blue, Holds 20 Round-Handles, 10in x 5in x 2in

995-005 Quarter Module, Tray and Lid, Green, Holds 9 Suctions, 10in x 5in x 2in

995-006 Half Base Module, Tray and Lid, Silver, 10in x 10in x 4in



Office Instruments



Office Instruments

MICRO EAR SCISSORS by BELLUCCI

- 178100BL Delicate, Straight, Blade Length 4.0mm
- 178200BL Very Delicate, Straight, Blade Length 3.0mm



EAR FORCEPS by HARTMANN

- 026100BL Straight, Serrated, 1.8mm x 8.0mm



MICRO EAR FORCEPS by HARTMANN

- 180100BL Straight, Serrated, 0.8mm x 6.0mm
- 180600BL Straight, Serrated, 0.8mm x 4.0mm
- 180601BL Curved Left, Serrated, 0.8mm x 4.0mm
- 180602BL Curved Right, Serrated, 0.8mm x 4.0mm



EAR CUP FORCEPS by STRUEMPEL

028100BL Straight, Oval 2.5mm x 6.5mm



MICRO EAR CUP FORCEPS

179600BL Straight, Oval 0.9mm x 1.2mm



EAR TAMPON FORCEPS by HARTMANN

031100BL Slender 1.9mm x 6.0mm



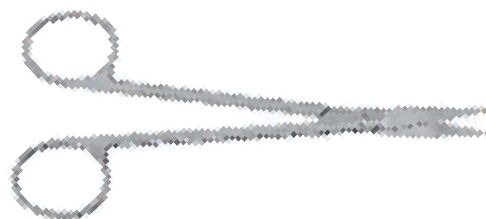
STANDARD OPERATING SCISSORS

083202BL Straight, Sharp/Blunt, Length 145mm



PLASTIC SURGERY SCISSORS by JOSEPH

176714BL Curved, Sharp, Length 145mm



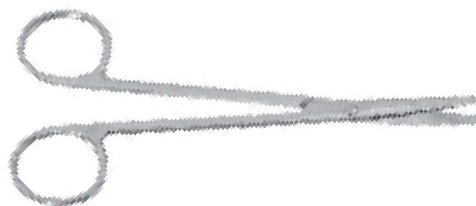
IRIS SCISSORS

177610BL Straight, Sharp, Length 105mm
177710BL Curved, Sharp, Length 105mm
177912BL Delicate, Curved, Sharp, Length 115mm



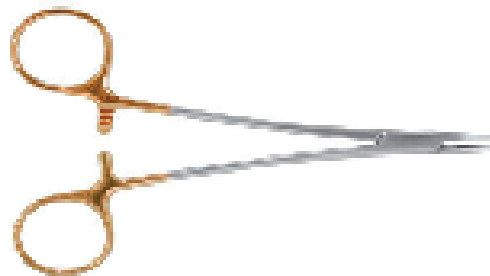
DISSECTING SCISSORS by METZENBAUM

442114BL Curved, Blunt, Length 145mm



NEEDLE HOLDER by CRILE-WOOD

113115BL Tungsten Carbide, Length 150mm



EAR DRESSING FORCEPS by TROELTSCH

032111BL Delicate, Length 110mm



EAR DRESSING FORCEPS by LUCAS

032414BL Bayonet, Length 140mm

EAR DRESSING FORCEPS by JANSEN

032416BL Bayonet, Length 160mm



DRESSING FORCEPS by SEMKEN

108712BL Delicate, Straight, Length 125mm

DRESSING FORCEPS

109114BL Straight, Length 145mm

109120BL Straight, Length 200mm



TISSUE FORCEPS by ADSON-BROWN

325112BL 7 x 7 Teeth, Length 120mm

DRESSING FORCEPS by ADSON

325212BL Delicate, Serrated, Length 120mm

TISSUE FORCEPS by ADSON

325312BL Delicate, 1 x 2 Teeth, Length 120mm



SUCTION TUBE by BARON

034903BL 3.0 Fr., Working Length 75mm

034905BL 5.0 Fr., Working Length 75mm

034907BL 7.0 Fr., Working Length 75mm



SUCTION TUBE by FRAZIER

110106BL 6 Fr., Working Length 100mm

110108BL 8 Fr., Working Length 100mm

110110BL 10 Fr., Working Length 100mm

110112BL 12 Fr., Working Length 100mm

110115BL 15 Fr., Working Length 100mm



ANTRUM CANNULA by V. EICKEN

049702BL Long Curve, Outer Diameter 2.5mm, Luer-Lock, Length 150mm

049703BL Long Curve, Outer Diameter 3.0mm, Luer-Lock, Length 150mm

049704BL Long Curve, Outer Diameter 4.0mm, Luer-Lock, Length 150mm



ANTRUM CANNULA by V. EICKEN

049712BL	Short Curve, Outer Diameter 2.5mm, Luer-Lock, Length 150mm
049713BL	Short Curve, Outer Diameter 3.0mm, Luer-Lock, Length 150mm
049714BL	Short Curve, Outer Diameter 4.0mm, Luer-Lock, Length 150mm



EAR LOOP by BILLEAU

023101BL	Straight, Diameter 3.5mm x 5.0mm, Length 165mm
023102BL	Straight, Diameter 4.0mm x 6.5mm, Length 165mm
023103BL	Straight, Diameter 4.5mm x 8.5mm, Length 165mm



EAR LOOP by SNELLEN

023301BL	Curved, Serrated, Diameter 4.0mm x 7.0mm, Length 150mm
023302BL	Curved, Serrated, Diameter 6.0mm x 8.0mm, Length 150mm
023303BL	Curved, Serrated, Diameter 7.0mm x 9.0mm, Length 150mm



EAR LOOP by SHAPLEIGH

023401BL	Curved, Serrated, Diameter 4.0mm x 6.0mm, Length 165mm
023402BL	Curved, Serrated, Diameter 5.0mm x 8.0mm, Length 165mm



EAR HOOK by LUCAE

023601BL	With Ball-End Tip, Tip Length 2.0mm, Total Length 140mm
023602BL	With Ball-End Tip, Tip Length 2.5mm, Total Length 140mm



EAR HOOK by WAGENER

023701BL	Without Ball-End Tip, Tip Length 1.5mm, Total Length 160mm
023702BL	Without Ball-End Tip, Tip Length 2.0mm, Total Length 160mm
023703BL	Without Ball-End Tip, Tip Length 2.5mm, Total Length 160mm



EAR CURETTE by BUCK

025120BL	Blunt, Diameter 1.5mm, Length 150mm
025110BL	Blunt, Diameter 2.0mm, Length 150mm
025101BL	Blunt, Diameter 2.5mm, Length 150mm
025102BL	Blunt, Diameter 3.2mm, Length 150mm
025103BL	Blunt, Diameter 4.0mm, Length 150mm
025220BL	Sharp, Diameter 1.5mm, Length 150mm
025210BL	Sharp, Diameter 2.0mm, Length 150mm
025201BL	Sharp, Diameter 2.5mm, Length 150mm
025202BL	Sharp, Diameter 3.2mm, Length 150mm
025203BL	Sharp, Diameter 4.0mm, Length 150mm



TYMPANUM PERFORATOR by LUCAE

034100BL	Bayonet, Length 150mm
----------	-----------------------



TUNING FORK by HARTMANN

038101BL	256 Hz, Nickel-Plated Steel
038102BL	512 Hz, Nickel-Plated Steel
038103BL	1024 Hz, Nickel-Plated Steel



EAR SPECULUM by HARTMANN

018100BL	Inner Diameter 1.8mm, Chrome Finish
018101BL	Inner Diameter 3.2mm, Chrome Finish
018102BL	Inner Diameter 4.0mm, Chrome Finish
018103BL	Inner Diameter 6.0mm, Chrome Finish
018104BL	Inner Diameter 6.5mm, Chrome Finish



EAR SPECULUM by HARTMANN

018401BL	Inner Diameter 3.0mm, Black Finish
018402BL	Inner Diameter 4.0mm, Black Finish
018403BL	Inner Diameter 5.0mm, Black Finish
018404BL	Inner Diameter 7.0mm, Black Finish



EAR SPECULUM by GRUBER

018801BL	Oval, Inner Diameter 3.2mm x 4.2mm, Chrome Finish
018802BL	Oval, Inner Diameter 5.0mm x 6.0mm, Chrome Finish
018803BL	Oval, Inner Diameter 5.6mm x 7.0mm, Chrome Finish



EAR SPECULUM by FARRIOR

116101BL	Inner Diameter 4.5mm, Chrome Finish
116102BL	Inner Diameter 5.5mm, Chrome Finish
116103BL	Inner Diameter 6.5mm, Chrome Finish
116104BL	Inner Diameter 7.5mm, Chrome Finish
116105BL	Inner Diameter 8.5mm, Chrome Finish
116106BL	Inner Diameter 9.5mm, Chrome Finish
116107BL	Inner Diameter 10.5mm, Chrome Finish



EAR SPECULUM by FARRIOR

116311BL	Oval, Inner Diameter 4.2mm x 4.6mm, Black Finish
116312BL	Oval, Inner Diameter 5.2mm x 5.8mm, Black Finish
116313BL	Oval, Inner Diameter 5.9mm x 6.8mm, Black Finish
116314BL	Oval, Inner Diameter 7.0mm x 8.0mm, Black Finish
116315BL	Oval, Inner Diameter 8.0mm x 9.2mm, Black Finish
116316BL	Oval, Inner Diameter 8.8mm x 10.0mm, Black Finish
116317BL	Oval, Inner Diameter 9.5mm x 10.8mm, Black Finish



NASAL SPECULUM by TIECK-HALLE

040100BL	For Infants, Blade Length 17.5mm, Total Length 130mm
040110BL	For Children, Blade Length 21.0mm, Total Length 130mm



NASAL SPECULUM by HARTMANN-HALLE

041101BL	Blade Length 29.0mm, Total Length 155mm
041102BL	Blade Length 33.0mm, Total Length 155mm
041103BL	Blade Length 37.0mm, Total Length 155mm



VIENNA NASAL SPECULUM

041701BL	Blade Length 26.0mm, Length 140mm
041702BL	Blade Length 29.5mm, Length 140mm
041703BL	Blade Length 33.0mm, Length 140mm



COTTON APPLICATOR by FARRELL

022114BL	Serrated, Diameter 1.2mm, Length 140mm
022314BL	Triangular, Diameter 1.2mm, Length 140mm
022316BL	Triangular, Diameter 1.2mm, Length 160mm
022714BL	Triangular / Serrated, Diameter 1.5mm, Length 140mm

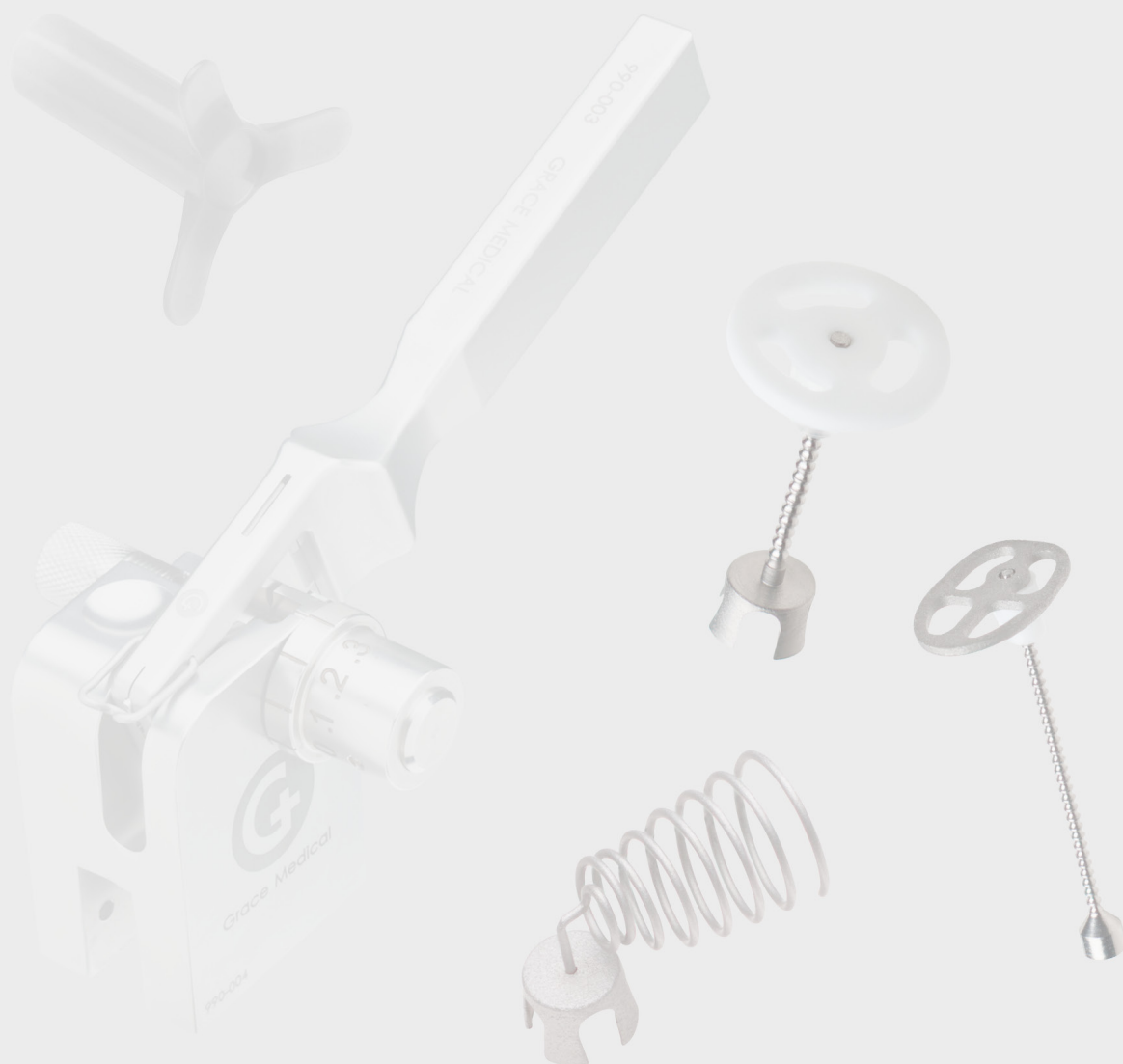


LARYNGEAL MIRROR

054020BL	Diameter 8mm
054000BL	Diameter 10mm
054001BL	Diameter 12mm
054002BL	Diameter 14mm
054003BL	Diameter 16mm
054004BL	Diameter 18mm
054005BL	Diameter 20mm
054006BL	Diameter 22mm
054007BL	Diameter 24mm
054008BL	Diameter 26mm
054009BL	Diameter 28mm
054010BL	Diameter 30mm



Instrument Sets



Instrument Sets

Larynx Advanced Retractor System (LARS)

Ref. #	Description
530500FX	Chest Support
540504FX	Cheek Retractor, WL 4cm, Pair
540507FX	Larynx Advanced Retractor System (LARS)
540508FX	Attachment Connector for Chest Support
540509FX	Cheek Retractor, WL 9cm, Pair
540511FX	Cheek Retractor, WL 11cm, Pair
540512FX	Cheek Holders for Cheek Retractors, Pair
540513FX	Tongue Blade, Curved, TL 16cm
540514FX	Mandibular Blade, TL 14cm
540516FX	Tongue Blade, Curved w/ Right Aperture, TL 18cm
540517FX	Tongue Blade, Curved w/ Left Aperture, TL 18cm
540518FX	Tongue Blade, Curved w/out Aperture, TL 18cm
540519FX	Laryngeal Blade, Concave, Slightly Curved, WL 15cm, TL 25cm
540520FX	Laryngeal Blade, Concave, Slightly Curved, WL 17cm, TL 26.5cm
540521FX	Diverticuloscope Blade, Concave, Slightly Curved, WL 22cm, TL 31cm
540522FX	Special Blade with Stop Button, WL 15cm
540524FX	Fiberglass Light Carrier
540525FX	Smoke Evacuation Tube, 4MM Ø
540526FX	Disposable Suction Tips, Ø 7mm, flexible, non-sterile, for 540525FX, pack of 100
540528FX	Clip Bar for Light Carrier, Smoke Evacuation Tube, Grasping Forceps, or 4mm Scopes
540529FX	Retaining Clip for Light Carrier, Smoke Evacuation Tube, Grasping Forceps, or 4mm Scopes
540545FX	Tumor Grasping Forceps, Flexible, 4MM Ø
540560FX	Adjustment Screwdriver

Designed in conjunction with Marc Remacle, MD, PhD and
Georges Lawson, MD, Louvain University Hospital of Mont-Godinne, Yvoir, Belgium

Weiss Instrument Set (for Balloon Sinuplasty)

Ref. #	Description
049107FX	Injection Cannula by WEISS, for frontal sinus 70°, WL 110mm
049110FX	Injection Cannula by WEISS, for maxillary sinus 110°, WL 110mm
049650FX	Suction Cannula by WEISS, for right maxillary sinus 90°, Ø 2.5mm, WL 90mm
049651FX	Suction Cannula by WEISS, for left maxillary sinus 90°, Ø 2.5mm, WL 90mm
049652FX	Suction Cannula by WEISS, for frontal sinus 70°, Ø 2.5mm, WL 90mm
215215FX	Elevator/Retractor by WEISS, double-ended, straight blunt and 90° curved blunt, L 200mm
032416FX	Dressing Forceps by JANSEN, bayonet, L 16cm
034907FX	Suction Tube by BARON, 7 Fr., WL 75mm
043101FX	Nasal Speculum by HARTMANN, for adults, blade L 34mm, L 130mm
086409FX	Towel Forceps by LORNA, non-perforating, L 100mm
110110FX	Suction Tube by FRAZIER, straight tip, cut-off hole, 10 Fr., WL 100mm
177511FX	Dissecting Scissors by STEVENS, curved, blunt, ergo. rings, L 100mm
226301FX	Nasal Scissors, curved left, serrated, WL 130mm
227100FX	Nasal Forceps by TAKAHASHI, Str., W 2.5mm, L 110mm
230100FX	Nasal Forceps by BLAKESLEY, straight 0°, size 0 = 3mm, WL 110mm
230200FX	Nasal Forceps by BLAKESLEY, angled 45°, size 0 = 3mm, WL 110mm
361100FX	Nasal Fracture Elevator by BOIES, oval blade, blunt, blade W 8mm, L 185mm
365113FX	Needle Holder by NEIVERT, one jaw w. special grooves, thumb ring up, L 130mm
418719FX	Maxillary Sinus Ostium Seeker, double-ended, tips 1.2mm and 2.0mm, L 190mm
708770FX	Storage/Cleaning Tray (1) for WEISS
708771FX	Storage/Cleaning Tray (2) for WEISS
049100FX	Complete Instrument Set by WEISS

Designed in conjunction with Ray Weiss, MD, Biloxi, MS

Major Middle Ear Tray

Ref. #	Description
185200FX	Wire Crimper by Fisch-McGee, Jaw Size 1.1 x 3.5 mm, Downward, WL 80 mm
118900FX	Flexible Tension Arm with Holding Rod
118901FX	Rotating Clamp for Flexible Tension Arm
118902FX	Clamp for Ear Speculum
169720FX	Cutting Block
163105FX	Sickle Knife by Fisch, 16 cm Length
151100FX	Lancet Knife by Rosen, WL 16.5 cm Angled 45°, 2 x 3 mm
154700FX	Needle by Wullstein, WL 16.5 cm, Very Slight Curved, Sharp
160100FX	Rosen Elevator, 1.2 mm Wide, x 13 mm Length 16 cm
172702FX	Curette Oval by House, Oval, Curved, Large, 2.2 mm and 2.5mm, Length 17 cm
160545FX	Stapes Knife by Austin, 20° Angled Up Shaft Straight, 168 mm Round Handle
154500FX	Needle by Wullstein, WL 16.5 cm, Curved Short, Sharp
156600FX	Stapes Measuring Rod, Length 16 cm
154100FX	Needle by Wullstein, WL 16.5 cm, Straight, Sharp
157680FX	Oval Window Hook by House, 0.33 mm Tip 30° Angled, Malleable Shaft
157682FX	Oval Window Hook by House, 0.33 mm Tip 90° Angled, Malleable Shaft
157684FX	Oval Window Hook by House, 0.5 mm Tip 90° Angled, Malleable Shaft
155108FX	Micro Pick, 90° Angled, 16.5 cm, 0.8 mm
160533FX	Excavator by Austin, Tip 0.33 mm, 90° Curved Shaft Malleable, 168 mm
121554FX	Chisel by Derlacki, 0.5mm Wide Edge Straight
156900FX	Plester Prosthesis Introducer, 16.5 cm
018401FX	Ebonized Ear Speculum by Hartmann, 3 mm I.D., Round
018402FX	Ebonized Ear Speculum by Hartmann, 4 mm I.D., Round
116311FX	Ear Speculum by Farrior, Oval, Black Finish, 20° Oblique End, 4.2 x 4.6 mm
116313FX	Ear Speculum by Farrior, Oval, Black Finish, 20° Oblique End, 7.0 x 8.0 mm
179600FX	Micro Cup-Shaped Forceps, Oval, Straight 0.9 x 1.2 mm, WL 8 cm
179603FX	Micro Cup-Shaped Forceps, Oval, Curved 0.9 x 1.2 mm, WL 8 cm
181600FX	Micro Forceps by House, Serrated, Very Delicate 8 cm
180710FX	Micro Ear Forceps, Very Delicate, Straight, Smooth Jaws, 0.6 x 4 mm
178102FX	Micro Scissors by Bellucci, Curved Right, Delicate, Blades 4 mm, WL 8 cm
178101FX	Micro Scissors by Bellucci, Curved Left, Delicate, Blades 4 mm, WL 8 cm
183103FX	Malleus Nipper Punch by Dieter, Upbiting WL 8 cm
100211FX	Retractor by Wullstein, WL 11 cm, 3 x 3 prongs, Blunt
100320FX	Retractor by Weitlander, WL 20 cm, 3 x 4 prongs, Sharp
165603FX	Suction Tubing Adaptor by House, Luer Tip Length 5.2 cm
168606FX	Suction-Irrigator by House, Cyl., WL 9 cm 1.2 x 0.9 mm, Luer
168607FX	Suction-Irrigator by House, Cyl., WL 9 cm 0.9 x 0.7 mm, Luer
164600FX	Gelfoam Pressure Forceps by House, Large Platform 11 x 14 mm, Length 18 cm
157684FX	Oval Window Hook by House, 0.5 mm Tip 90° Angled, Malleable Shaft, 168 mm
106025FX	Dissector by House-Crabtree, 90° Angled Tip 0.5 mm x 2.5 mm, Flattened, Length 16 cm
108107FX	Elevator by Lempert, WL 18 cm, 7 mm Wide Bayonet Shaped

Major Middle Ear Tray (cont'd)

Ref. #	Description
155110FX	Micro Pick, 90° Angled, 1.0 mm, 16.5 cm
155130FX	Micro Pick, 90° Angled, 3.0 mm, 16 cm
150103FX	Round Knife by Rosen, 45° Angled, 2 mm
150102FX	Round Knife by Rosen, 45° Angled, 2.3 mm
329103FX	Scalpel Handle No. 3 Solid, WL 12.5 cm
329107FX	Scalpel Handle No. 7 Solid, WL 16 cm
177812FX	Iris Scissors, Straight, Sharp/Sharp, Length 11.5 cm
112117FX	Operating Scissors by Mayo, WL 17 cm, Straight
178515FX	Dissecting Scissors by Jameson, Curved, Delicate, Length 15 cm
109811FX	Jeweler Forceps, WL 11 cm, Pointed, Straight
325512FX	Micro-Tissue Forceps by Adson, 1 x 2 Teeth, Very Delicate, WL 12 cm
325112FX	Delicate Tissue Forceps by Adson-Brown, 7 x 7 Side Grasping Teeth, WL 12 cm
032424FX	Ear Dressing Forceps by Lucae, WL 14 cm, Bayonet, Very Delicate
113213FX	Needle Holder by Halsey with Tungsten Carbide Inserts with Ratchet, WL 13 cm
330532FX	Micro Needle Holder by Castroviejo, Straight, Very Delicate with Lock, WL 14 cm
464200FX	Retractor by Senn-Miller, Blunt, L = 16 cm, 3 Blunt Prongs
143150FX	Mastoid Curette by Lempert, WL 21 cm, 2.0 mm x 3.0 mm
143140FX	Mastoid Curette by Lempert, WL 21 cm, 2.0 mm x 3.5 mm
143130FX	Mastoid Curette by Lempert, WL 21 cm, 2.5 mm x 4.0 mm
143120FX	Mastoid Curette by Lempert, WL 21 cm, 3.0 mm x 4.5 mm
133100FX	Bone Rongeur by Beyer, WL 18 cm, Delicate, Curved
168605FX	Suction-Irrigator by House, Cyl., WL 9 cm 1.5 x 1.2 mm, Luer
110110FX	Suction Tube by Frazier, 3.35 mm Ø, 10 Charr., Stainless, WL 10 cm
023101FX	Ear Loop by Billeau, WL 16.5 cm, Straight, 3.5 x 5.0 mm
023102FX	Ear Loop by Billeau, WL 16.5 cm, Straight, 4.0 x 6.5 mm
025220FX	Ear Curette by Buck, WL 15 cm, Sharp, 1.5 mm
025210FX	Ear Curette by Buck, WL 15 cm, Sharp, 2.0 mm
025201FX	Ear Curette by Buck, WL 15 cm, Sharp, 2.5 mm
025202FX	Ear Curette by Buck, WL 15 cm, Sharp, 3.2 mm
025203FX	Ear Curette by Buck, WL 15 cm, Sharp, 4.0 mm
027104FX	Ear Forceps by Hartmann, 3 mm Ø, WL 8 cm, Round Cup Jaws, Straight
166412FX	Suction Cannula by House, 1.5 mm Ø, LL, W. Mandrin
165102FX	Adaptor by Wullstein, 18/8 Straight, Length 11 cm, Luer-Cone
166407FX	Suction Cannula by House, 0.7 mm Ø, LL, W. Mandrin
166410FX	Suction Cannula by House, 1.0 mm Ø, LL, W. Mandrin
034903FX	Suction Tube by Baron, WL 7.5 cm, 3 Charr
034905FX	Suction Tube by Baron, WL 7.5 cm, 5 Charr
034907FX	Suction Tube by Baron, WL 7.5 cm, 7 Charr
338814FX	Plastic Surgery SCS by Kilner, Curved Flat Blade Ends, WL 14 cm
708641FX	Sterilization Tray with Removable Lid, Stainless Steel, 480 x 250 x 60 mm with Silicone Mat

Stapedectomy Set

Ref. #	Description
150101FX	Round Knife by Rosen, 45° Angled, 2.5 mm
152200FX	Roller Knife by Schuhknecht, WL 16.5 cm, Horizontal
118900FX	Flexible Tension Arm with Holding Rod
118901FX	Rotating Clamp for Flexible Tension Arm
118902FX	Clamp for Ear Speculum
121536FX	Mobilizer Derlackiby Shambough, Angled Serrated Round End
172600FX	Curette by House, Curved, Round, Double Ended, 1.0 and 1.2 mm Ø, Length 17 cm
156444FX	Pick Large by McGee Round, Large Shaft 20° Angled, Tip Straight, 157 mm Round Handle
156445FX	Pick Large by McGee Round, Small Shaft 20° Angled, Tip Straight, 157 mm Round Handle
163105FX	Sickle-Knife by Fisch, Length 16 cm
154800FX	Needle by Wullstein, WL 16.5 cm, Very Slight Curved, Blunt
160100FX	Rosen Elevator, 1.2 mm Wide x 13 mm Length 16 cm
172702FX	Curette Oval by House, Oval, Curved, Large, 2.2 and 2.5 mm Ø, Length 17 cm
160545FX	Stapes Knife by Austin, 20° Angled Up Shaft Straight, 168 mm Round Handle
154500FX	Needle by Wullstein, WL 16.5 cm, Curved Short, Sharp
156600FX	Stapes Measuring Rod, Length 16 cm
157682FX	Oval Window Hook by House, 0.33 mm Tip 90° Angled, Malleable Fine Shaft, 168 mm Round Handle
160533FX	Excavator by Austin, Tip 0.33 mm, 90° Curved Shaft Malleable, 168 mm Octagonal Handle
018401FX	Ear Speculum by Hartmann, 3 mm I.D., Round, Black Finish Inside
018402FX	Ear Speculum by Hartmann, 4 mm I.D., Round, Black Finish Inside
018403FX	Ear Speculum by Hartmann, 5 mm I.D., Round, Black Finish Inside
116311FX	Ear Speculum by Farrior, Oval, Black Finish, 20° Oblique End, 4.2 x 4.6 mm
018404FX	Ear Speculum by Hartmann, 7 mm I.D., Round, Black Finish Inside
116314FX	Ear Speculum by Farrior, Oval, Black Finish, 20° Oblique End, 7.0 x 8.0 mm
018208FX	Ear Speculum for Post Op Check Up by Hartmann, Round, 8 mm I.D., Ebonized
180610FX	Micro Ear Forceps, Smooth, 0.8 x 4 mm, Straight, WL 80 mm
179601FX	Micro Cup-Shaped Forceps, Oval, Curved Left, 0.9 x 1.2 mm, WL 8 cm
179602FX	Micro Cup-Shaped Forceps, Oval, Curved Right, 0.9 x 1.2 mm, WL 8 cm
181600FX	Micro Forceps by House, Serrated, Very Delicate, 8 cm
179600FX	Micro Cup-Shaped Forceps, Oval, Straight, 0.9 x 1.2 mm, WL 8 cm
178300FX	Scissors by Shea-Bellucci, Straight, Blades 8 mm, WL 8 cm
178301FX	Scissors by Shea-Bellucci, Curved Left, 8 mm Blades, WL 8 cm
178302FX	Scissors by Shea-Bellucci, Curved Right, 8 mm Blades, WL 8 cm
100211FX	Retractor by Wullstein, WL 11 cm, 3 x 3 Prongs, Blunt
100320FX	Retractor by Weitlander, WL 20 cm, 3 x 4 Prongs, Sharp
185131FX	Wire Closure Forceps by McGee, Large 5.5 x 0.9 mm
165603FX	Suction Tubing Adaptor by House, Luer Tip Length 5.2 cm
164600FX	Gelfoam Pressure Forceps by House, Large of Platform 11 x 14 mm, Length 18 cm
157684FX	Oval Window Hook by House, 0.5 mm Tip 90° Angled, Malleable Shaft, 168 mm, Round Handle
106025FX	Dissector by House-Crabtree, 90° Angled Tip 0.5 mm x 2.5 mm, Flattened, Length 16 cm, Round Handle
108107FX	Elevator by Lempert, WL 18 cm, 7 mm Wide Bayonet Shaped

Stapedectomy Set (cont'd)

Ref. #	Description
150103FX	Round Knife by Rosen, 45° Angled, 2 mm
150102FX	Round Knife by Rosen, 45° Angled, 2.3 mm
180605FX	Alligator Forceps by House, Horizontal Jaws
442518FX	Scissors by Metzenbaum-Fino, Curved 18 cm
032424FX	Ear Dressing Forceps by Lucae, WL 14 cm, Bayonet, Very Delicate
108103FX	Elevator by Lempert, WL 17 cm, 4 mm Wide
329103FX	Scalpel Handle No. 3 Solid, WL 12.5 cm Stainless Steel
329107FX	Scalpel Handle No. 7 Solid, WL 16 cm Stainless Steel
112117FX	Operating Scissors by Mayo, WL 17 cm, Straight
113115FX	Needle Holder by Crile-Wood, WL 15 cm, with Tungsten Carbide Inserts
113112FX	Webster Needle Holder Smooth Jaw 12.5 cm
464200FX	Retractor by Senn-Miller, Blunt, L = 16 cm, 3 Blunt Prongs
100113FX	Retractor by Wullstein, WL 13 cm, 3 x 3 Prongs, Sharp
168607FX	Suction-Irrigator by House, Cyl., WL 9 cm, 0.9 x 0.7 mm, Luer
168606FX	Suction-Irrigator by House, Cyl., WL 9 cm, 1.2 x 0.9 mm, Luer
168605FX	Suction-Irrigator by House, Cyl., WL 9 cm, 1.5 x 1.2 mm, Luer
166412FX	Suction Cannula by House, 1.5 mm Ø, LL, W.Mandrin
165102FX	Adaptor by Wullstein, 18/8 St., Length 11 cm, Luer-Cone
166407FX	Suction Cannula by House, 0.7 mm Ø, LL, W.Mandrin
166410FX	Suction Cannula by House, 1.0 mm Ø, LL, W.Mandrin
177210FX	Strabismus Scissors, BL/BL Curved, Length 10 cm
316815FX	Joseph Skin Hook, Single Sharp Prong WL 15 cm
034903FX	Suction Tube by Baron, WL 7.5 cm, 3 Charr
034905FX	Suction Tube by Baron, WL 7.5 cm, 5 Charr
034907FX	Suction Tube by Baron, WL 7.5 cm, 7 Charr
177610FX	Iris Scissors, Straight, SH/SH, Length 10.5 cm
708641FX	Sterilization Tray with Removable Lid, Stainless Steel, 480 x 250 x 60 mm with Silicone Mat

Slattery Stapes Set

Ref. #	Description
153800FX	Knife by Plester, WL 16.5 cm, Curved
150101FX	Round Knife by Rosen, 45° Angled, 2.5 mm
154600FX	Needle by Wullstein, WL 16.5 cm, Strong Curved, Blunt
150107FX	Round Knife by Rosen, 45° Angled, 1 mm
156600FX	Stapes Measuring Rod, Length 16 cm
159406FX	Schuhknecht Micro Hook, 16.5 cm, 45° Angled, 0.6 mm, Upward
155115FX	Micro Pick, 90° Angled, 16.5 cm, 1.5 mm
162700FX	Hand-Drill Diamand 0.7 mm Length 16 cm
160100FX	Rosen Elevator, 1.2 mm Wide, Length 16 cm
154100FX	Needle by Wullstein, WL 16.5 cm, Straight, Sharp
172703FX	Curette by House, Oval, Curved, Large, Length 17 cm
178100FX	Micro Scissors by Bellucci, Delicate, Straight, Blades 4 mm, WL 8 cm
185100FX	Wire Crimper by McGee, Straight, 0.8 x 3.5 mm, WL 8 cm
156900FX	Plester Prothesis Introducer, 16.5 cm
165602FX	Suction Adaptor by House, Luer Tip, Length 5.2 cm
018101FX	Ear Speculum by Hartmann, 3.2 mm I.D., Stainless Steel
018102FX	Ear Speculum by Hartmann, 4.0 mm I.D., Stainless Steel
018103FX	Ear Speculum by Hartmann, 5.3 mm I.D., Stainless Steel
018104FX	Ear Speculum by Hartmann, 6.5 mm I.D., Stainless Steel
151100FX	Lancet Knife by Rosen, WL 16.5 cm
166205FX	Suction Cannula by House, Angled, Luer-Lock, 0.5 mm Ø, WL 7 cm (25 Gauge)
166206FX	Suction Cannula by House, Angled, Luer-Lock, 0.6 mm Ø, WL 7 cm (22 Gauge)
166208FX	Suction Cannula by House, Angled, Luer-Lock, 0.8 mm Ø, WL 7 cm (20 Gauge)
166210FX	Suction Cannula by House, Angled, Luer-Lock, 1.0 mm Ø, WL 7 cm (18 Gauge)
180610FX	Micro Ear Forceps, Smooth, 0.8 x 4.00 mm, Straight
179600FX	Micro Cup-Shaped Forceps, Oval, Straight, WL 8 cm
189970FX	Sterilization Case Metal with 1 Rack, 380 x 260 x 50 mm, with Silicone Racks

Tonsil and Adenoid Set

Ref. #	Description
329107FX	Scalpel Handle No. 7 Solid, WL 16 cm Stainless Steel
442318FX	Scissors by Metzenbaum, Curved 18 cm "TC" Super Cut
112117FX	Operating Scissors by Mayo, WL 17 cm, Straight
085618FX	Cotton Swab Forceps by Foester Straight Serrated, Length 18 cm
085619FX	Cotton Swab Forceps by Foester Curved Serrated, Length 18 cm
084214FX	Peaen Artery Forceps Delicate, Curved
451100FX	Tonsil Forceps by Schmidt, Slightly Curved Slender, Length 19 cm
114223FX	Needle Holder by Stratte, WL 23 cm, Curved with Tungsten Carbide Inserts
468101FX	Tracheal Retractor, 1 Prong, Blunt, 16 cm
468102FX	Tracheal Retractor, 2 Prongs, Blunt, 16 cm
468103FX	Tracheal Retractor, 3 Prongs, Blunt, 16 cm
468104FX	Tracheal Retractor, 4 Prongs, Blunt, 16 cm
435600FX	Tonsil Forceps by Colver, Straight, 19 cm
402402FX	Adenoid Punch N. Meltzer, 8 mm, Angular Basket, Straight, WL 14 cm
054000FX	Laryngeal Mirror with Fixed Handle, Stainless Steel, 10 mm
054003FX	Laryngeal Mirror with Fixed Handle, Stainless Steel, 16 mm
427101FX	Tongue Depressor by Russel-Davis, W. Channel, Size 1 = 28 x 65 mm
427102FX	Tongue Depressor by Russel-Davis, W. Channel, Size 2 = 32 x 75 mm
427103FX	Tongue Depressor by Russel-Davis, W. Channel, Size 3 = 37 x 80 mm
427104FX	Tongue Depressor by Russel-Davis, W. Channel, Size 4 = 41 x 94 mm
427105FX	Tongue Depressor by Russel-Davis, W. Channel, Size 5 = 46 x 103 mm
428101FX	Tongue Depressor "Modell Würzburg", Small
428104FX	Tongue Depressor "Modell Würzburg", Large
440603FX	Adenotome by La Force, 12 mm
440602FX	Adenotome by La Force, 16 mm
440601FX	Adenotome by La Force, 18 mm
440501FX	Adenoid Curette by Barnhill, Straight, Small
440502FX	Adenoid Curette by Barnhill, Straight, Medium
440503FX	Adenoid Curette by Barnhill, Straight, Large
440504FX	Adenoid Curette by Barnhill, Straight, X-Large
433100FX	Tonsil Dissector + Pillar Retractor by Hurd, 10 mm, WL 23 cm
434100FX	Suction Tube by Yankauer Complete 18/8 - S, WL 27 cm
441600FX	Tonsil Scissors by Boettcher, Curved, 19 cm
211200FX	Wire Only, 0.4 mm Diameter, Coil of 10 M
446400FX	Tonsil Snare by Tyding with 1 Straight Tip
402411FX	Adenoid Punch N. Meltzer, 7 mm with Round Basket, WL 14 cm
440300FX	Reverse Adenoid Curette by Negus, Curved, Size 0, WL 21 cm
440301FX	Reverse Adenoid Curette by Negus, Curved, Size 1, WL 21 cm
440302FX	Reverse Adenoid Curette by Negus, Curved, Size 2, WL 21 cm
440303FX	Reverse Adenoid Curette by Negus, Curved, Size 3, WL 21 cm
440304FX	Reverse Adenoid Curette by Negus, Curved, Size 4, WL 21 cm

Tonsil and Adenoid Set (cont'd)

Ref. #	Description
449200FX	Tonsil Knife by Colver (Fisher), 22.5 cm
426100FX	Mouth Gag by Davis-Boyle, Left Frame, To be used with Tongue Depressors 425101FX - 425803FX
426400FX	Davis-Boyle Mouth Gag for Children, Left Frame Only, To be used with Davis-Boyle
440611FX	Blade Only For Adenotomes Size 1
440612FX	Blade Only For Adenotomes Size 2
440613FX	Blade Only For Adenotomes Size 3
708641FX	Sterilization Tray with Removable Lid, Stainless Steel, 480 x 250 x 60 mm with Silicone Mat

Tympanostomy Set

Ref. #	Description
027804FX	Ear Forceps by Noyes, 4 mm Jaws, Serrated with Spring to Close Jaws, WL 87 mm
154800FX	Needle by Wullstein, WL 16.5 cm, Very Slight Curved, Blunt
018401FX	Ear Speculum by Hartmann, 3 mm I.D., Round, Black Finish Inside
116311FX	Ear Speculum by Farrior, Oval, Black Finish, 20° Oblique End, 4.2 x 4.6 mm
116314FX	Ear Speculum by Farrior, Oval, Black Finish, 20° Oblique End, 7.0 x 8.0 mm
179700FX	Micro Cup Forceps, Oval, Straight, Very Delicate, 0.6 x 1 mm, WL 8 cm
178100FX	Micro Scissors by Bellucci, Delicate, Straight Blades, 4 mm, WL 8 cm
112117FX	Operating Scissors by Mayo, WL 17 cm, Straight
022114FX	Cotton Applicator by Farrell, 1.2 mm Ø, WL 14 cm, Serrated, Stainless
025220FX	Ear Curette by Buck, WL 15 cm, Sharp, 1.5 mm
025201FX	Ear Curette by Buck, WL 15 cm, Sharp, 2.5 mm
025203FX	Ear Curette by Buck, WL 15 cm, Sharp, 4.0 mm
034903FX	Suction Tube by Baron, WL 7.5 cm, 3 Charr.
034905FX	Suction Tube by Baron, WL 7.5 cm, 5 Charr.
034907FX	Suction Tube by Baron, WL 7.5 cm, 7 Charr.
155108FX	Micro Pick, 90° Angled, 16.5 cm, 0.8 mm
708641FX	Sterilization Tray with Removable Lid, Stainless Steel, 480 x 250 x 60 mm with Silicone Mat

House Ear Set

Ref. #	Description
163105FX	Sickle-Knife by Fisch, Length 16 cm
151100FX	Lancet Knife by Rosen, WL 16.5 cm, Angled 45°, 2 x 3 mm (Tab Tip)
154800FX	Needle by Wullstein, WL 16.5 cm, Very Slight Curve, Blunt
154700FX	Needle by Wullstein, WL 16.5 cm, Very Slight Curve, Sharp
160100FX	Rosen Elevator, 1.2 mm Wide x 13 mm Length 16 cm
172702FX	Curette Oval by House, Oval, Large, 2.2 mm and 2.5 mm Ø, Length 17 cm
160545FX	Stapes Knife by Austin, 20° Angled Up Shaft Straight, 168 mm Round Handle
154500FX	Needle by Wullstein, WL 16.5 cm, Curved Short, Sharp
156600FX	Stapes Measuring Rod
154100FX	Needle by Wullstein, WL 16.5 cm, Straight, Sharp
157680FX	Oval Window Hook by House, 0.33 mm Tip 30° Angled, Malleable Shaft, 168 mm; Round Handle
157682FX	Oval Window Hook by House, 0.33 mm Tip 90° Angled, Malleable Fine Shaft, 168 mm; Round Handle
157684FX	Oval Window Hook by House, 0.50 mm Tip 90° Angled, Malleable Shaft, 168 mm; Round Handle
155108FX	Micro Pick, 90° Angled, 16.5 cm, 0.8 mm
160533FX	Excavator by Austin, Tip 0.33 mm, 90° Curved Shaft Malleable, 168 mm Octagonal Handle
121554FX	Chisel by Derlacki, 0.5 mm Wide Edge Straight
156900FX	Plester Prosthesis Introducer, 16.5 cm
442014FX	Scissors by Metzenbaum-Fino, Staight, BL/BL, 14 cm
442114FX	Dissecting Scissors by Metzenbaum, BL/BL Curved 14.5 cm
165603FX	Suction Tubing Adapter by House, Luer Tip Length 5.2 cm
168606FX	Suction-Irrigator by House, Cyl., WL 9 cm 1.2 x 0.9 mm, Luer
168607FX	Suction-Irrigator by House, Cyl., WL 9 cm 0.9 x 0.7 mm, Luer
164600FX	Gelfoam Pressure Forceps by House, Large of Platform 11 x 14 mm, Length 18 cm
367115FX	Needle Holder by Senning, Slender, "TC" Length 15 cm
157684FX	Oval Window Hook by House, 0.5 mm Tip 90° Angled, Malleable Shaft, 168 mm; Round Handle
106025FX	Dissector by House-Crabtree, 90° Angled Tip 0.5 mm x 2.5 mm, Flattened, Length 16 cm Round Handle
108107FX	Elevator by Lempert, WL 18 cm, 7 mm Wide Bayonet Shaped
155110FX	Micro Pick, 90° Angled, 16.5 cm 1.0 mm
155130FX	Micro Pick, 90°, 3.0 mm, 16 cm
150103FX	Round Knife by Rosen, 45° Angled, 2 mm
150102FX	Round Knife by Rosen, 45° Angled, 2.3 mm
180605FX	Alligator Forceps by House, Horizontal Jaws
164600FX	Gelfoam Pressure Forceps by House, Large of Platform 11 x 14 mm, Length 18 cm
708641FX	Sterilization Tray with Removable Lid, Stainless Steel, 480 x 250 x 60 mm with Silicone Ma

Sinus Set

Ref. #	Description
434100FX	Suction Tube by Yankauer Complete 18/8-S WL 27 cm
329103FX	Scalpel Handle No. 3 Solid, WL 12.5 cm, Stainless Steel
250110FX	Suction Tube by Frazier, with Cut-Off Hole, 10 FR, WL 15 cm
250112FX	Suction Tube by Frazier, with Cut-Off Hole, 12 FR, WL 15 cm
250115FX	Suction Tube by Frazier, with Cut-Off Hole, 15 FR, WL 15 cm
305900FX	Suction Elevator by Gorney, with Mandrin, 3 mm Tip, Length 19 cm
227101FX	Nasal Forceps by Takahashi, Straight, WL 11 cm, Jaws 3 x 10 mm
227102FX	Nasal Forceps by Takahashi, 45° Upturned, WL 11 cm, Jaws 3 x 10 mm
113115FX	Needle Holder by Crile-Wood, WL 15 cm, with Tungsten Carbide Inserts
130100FX	Metal Mallet, 26 mm Ø WL 21 cm, Solid, 200 G
226301FX	Nasal Scissors for Concha, Curved Left, Serrated Blade, WL 13 cm
226302FX	Nasal Scissors for Concha, Curved Right, Serrated Blade, WL 13 cm
226300FX	Nasal Scissors for Concha, Straight, Serrated Blade, WL 13 cm
446200FX	Tonsil Snare by Eves w. Bruenings-Tip, 27 cm
418402FX	Antrum Sickle Knife, Tip Blunt, Double Cut, WL 19 cm
418401FX	Antrum Sickle Knife, Tip Pointed, WL 19 cm
418719FX	Maxillary Sinus Ostium Seeker, Double Ended, Ball Sizes: 1.2 mm and 2 mm Ø, WL 19 cm
418825FX	Frontal Sinus Ostium Seeker, Double Ended, Curved
230101FX	Nasal Forceps by Blakesley, Straight, WL 11 cm
230201FX	Nasal Forceps by Blakesley, 45° Upturned, WL 11 cm
230301FX	Nasal Forceps by Blakesley, 90° Upturned, WL 11 cm
230103FX	Nasal Forceps by Blakesley, Straight, WL 11 cm
230203FX	Nasal Forceps by Blakesley-Wilde, 45° Upturned, WL 11 cm
230303FX	Nasal Forceps by Blakesley-Wilde, 90° Upturned, WL 11 cm
237102FX	Suction Punch by Blakesley, Straight, 4 mm, WL
237202FX	Suction Punch by Blakesley, 45° Upcurved, 4 mm, WL
235065FX	Punch, 360° Circular Cutting, 65° Upturned, 3.5 mm Ø, WL 17 cm
235035FX	Punch, 360° Circular Cutting, Straight, 3.5 mm Ø, WL 18 cm
412502FX	Antrum Punch, Through-Cutting, 2 mm Wide, with Hooked Jaw, WL 18 cm
412503FX	Antrum Punch, Through-Cutting, 3 mm Wide, with Hooked Jaw, WL 18 cm
418204FX	Sinus Frontal Curette Oblong, Small Size, 55° Curved, 19 cm
418205FX	Sinus Frontal Curette Oblong, Small Size, 55° Curved, 19 cm
325312FX	Tissue Forceps by Adson, 1 x 2 Teeth, Delicate, WL 12 cm
415610FX	Rotating Antrum Grasping Forceps, Finger Post 360° Rotation, Retrograde Open Jaws 120°, WL 10 cm
415105FX	Biopsy and Grasping Forceps, Double Action, Round Cup Jaws 4 mm Ø, Vertical Opening, WL 18 cm
415170FX	Maxillary Biopsy Forceps, 70° Angled Down, Double Action Oval Cupped Jaws 3 mm Ø, WL 12 cm
415210FX	Maxillary Biopsy Forceps, 110° Angled Down, Double Action Oval Cupped Jaws 3 mm Ø, WL 12 cm
418101FX	Antrum Curette, Oval, 19 cm, Size 1
752930FX	Suction-Irrigation Sheath for Scopes 4 mm Ø - 30° for 750100FX and 750130FX
236301FX	Frontal Sinus Punch Forceps, 55° Upturned, Throughcut, Vertical Opening, 2 mm Ø, WL 14.5 cm
236302FX	Frontal Sinus Punch Forceps, 55° Upturned, Throughcut, Horizontal Opening, 2 mm Ø, WL 14.5 cm

Sinus Set (cont'd)

Ref. #	Description
236303FX	Frontal Sinus Punch Forceps, 90° Upturned, Throughcut, Vertical Opening, 2 mm Ø, WL 14.5 cm
236304FX	Frontal Sinus Punch Forceps, 90° Upturned, Throughcut, Horizontal Opening, 2 mm Ø, WL 14.5 cm
177709FX	Iris Scissors, Straight, SH/SH, Length 9.0 cm
235600FX	Septum-Forceps by Jansen, Double Action, Oval Spoon Blades, Length 18 cm
235700FX	Forceps by Jansen-Middleton, Throughcut, Double Action, Length 19 cm
032416FX	Ear Dressing Forceps by Jansen, WL 16 cm, Bayonet
339300FX	Dorsal Scissors by Cottle, Angular, Smooth Blades, WL 16 cm, with Tungsten Carbide Inserts
049703FX	Antrum Cannula by v.Eicken, 3 mm O.D., WL 15 cm, Long Curved, Luer
049704FX	Antrum Cannula by v.Eicken, 4 mm O.D., WL 15 cm, Long Curved, Luer
049713FX	Antrum Cannula by v.Eicken, 3 mm O.D., WL 15 cm, Short Curved, Luer
049714FX	Antrum Cannula by v.Eicken, 4 mm O.D., WL 15 cm, Short Curved, Luer
049803FX	Antrum Cannula by v.Eicken, 3 mm O.D., WL 15 cm, Malleable, Long Curved, Luer
221200FX	Septum Gouge by Killiam-Claus, V-Shaped, 5 mm Wide, Length 16.5 cm
418204FX	Sinus Frontal Curette Oblong, Small Size, 55° Curved, 19 cm
234901FX	Antrum Punch, Left Side, Downward and Forward Throughcut, WL 10 cm
234902FX	Antrum Punch, Right Side, Downward and Forward Throughcut, WL 10 cm
043101FX	Nasal Speculum by Hartmann, WL 13.5 cm, for Adults
300100FX	Nasal Speculum by Cottle, Slender Pattern Blade 55 mm, Length 13 cm, with Screw Set
243115FX	Sinus Grasping Forceps, Straight, Rough Serrated, WL 16 cm
234100FX	Fragment Forceps by Watson-Williams, Serrated, Straight, WL 11 cm
213100FX	Mucosa Knife by Freer, Length 15 cm
219102FX	Septum Swivel Knife by Ballenger, Bayonet Shaped, 4 mm Wide, Length 19.5 cm
304600FX	Septum Elevator by Cottle, Double Blade, Graduated, Length 23 cm
319100FX	Alar Retractor by Cottle, Short Blade, WL 14 cm
316300FX	Retractor by Cottle, Double Hook, Sharp, 10 mm Wide, WL 15 cm
316500FX	Double Hook by Freer, Double Hook, Sharp, WL 15 cm
317200FX	Hook by Cottle, Sharp, WL 15 cm
368109FX	Needle Holder by Masing-Cottle, Sheath 9 cm
113213FX	Needle Holder by Halsey, WL 13 cm, with Tungsten Carbide Inserts
113115FX	Needle Holder by Crile-Wood, WL 15 cm, with Tungsten Carbide Inserts
367215FX	Ryder Needle Holder Delicate 1.4 mm, "TC" Length 15 cm
750130FX	Hi-View Scope, 30°, 4 mm Ø, WL 185 mm, Autoclavable
750145FX	Hi-View Scope, 45°, 4 mm Ø, WL 185 mm, Autoclavable
750170FX	Hi-View Scope, 70°, 4 mm Ø, WL 185 mm, Autoclavable
708641FX	Sterilization Tray with Removable Lid, Stainless Steel, 480 x 250 x 60 mm with Silicone Mat

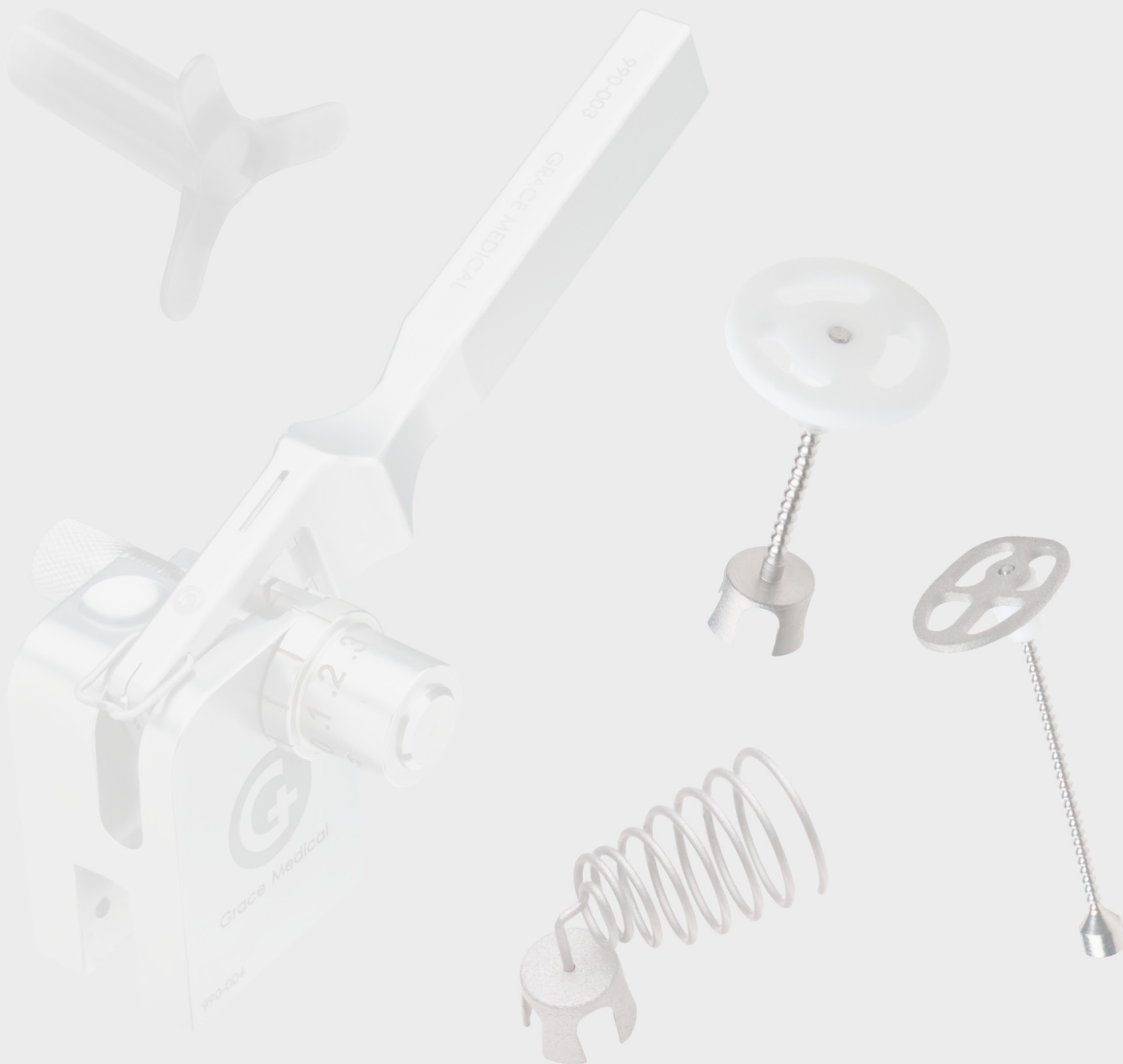
Rhinoplasty Set

Ref. #	Description
177212FX	Scissors, BL/BL, Curved, Length 11.5 cm, "TC"
177912FX	Scissors, Delicate, Curved, SH/SH, Length 11.5 cm
442318FX	Scissors by Metzenbaum, Curved, 18 cm, "TC", Super Cut
177712FX	Iris Scissors, Slightly Curved, SH/SH, "TC", Length 11.5 cm
177612FX	Iris Scissors, Straight, SH/SH, Length 11.5 cm, "TC"
113113FX	Webster Needle Holder, Smooth, 12.5 cm, "TC"
113114FX	Webster Needle Holder, Smooth, 15.2 cm, "TC"
316610FX	Hook by Joseph-Cottle, 2 Sharp Prong 10 mm Wide, WL 16 cm, for Plastic Surgery
316605FX	Hook by Joseph-Cottle, 2 Sharp Prong 5 mm Wide, WL 16 cm, for Plastic Surgery
316300FX	Retractor by Cottle, Double Hook, Sharp, 10 mm Wide, 15 cm Length
320200FX	Retractor by Siegal, 2 Ball-Tipped Prong 15 mm Wide, and Other Side Angled 8 mm Wide, Length 203 mm
322700FX	Retractor by Aufricht, 45 mm Blade Length, WL 17 cm
306301FX	Ostrotome by Richards, with Stabilizer, Straight Ø 10 mm, Length 18 cm
306302FX	Ostrotome by Richards, with Stabilizer, Curved Ø 10 mm, Length 18 cm
227111FX	Nasal Forceps by Takahashi, Straight, Jaws 2.5 x 8 mm, WL 11 cm
032414FX	Ear Dressing Forceps by Lucae, WL 14 cm, Bayonet
325112FX	Delicate Tissue Forceps by Adson-Brown, 7 x 7 Side Grasping Teeth, WL 12 cm
353600FX	Nasal Rasp by Maltz Large with 2 Blood Grooves, Length 16 cm, Down Cutting
356100FX	Nasal Rasp by Parkes, with 20 Fine Teeth, Down Cutting, Length 20.5 cm
306110FX	Osteotome by Rubin, With Stabilizer, 10 mm Width, Length 16 cm
306114FX	Osteotome by Rubin, With Stabilizer, 14 mm Width, Length 16 cm
041701FX	Nasal Speculum "Vienna", Size 1 Blade 26 mm, Length 14 cm
041702FX	Nasal Speculum "Vienna", Size 2 Blade 29.5 mm, Length 14 cm
041703FX	Nasal Speculum "Vienna", Size 3 Blade 33 mm, Length 14 cm
108103FX	Elevator by Lempert, WL 17 cm, 4 mm Wide
302700FX	Double Elevator by Dunning, Length 185 mm One side Cup, One Side Elevator
340600FX	Nasal Scissors by Caplan, Double Action Serrated Blades, Angled, WL 22 cm
307702FX	Osteotome by Sheehan (Rubin), Straight, 2 mm Wide, Hexagontal Handle, Length 16 cm
307703FX	Osteotome by Sheehan (Rubin), Straight, 3 mm Wide, Hexagontal Handle, Length 16 cm
313600FX	Mallet Light Weight, Metal, with 2 Replacement Nylon Caps
708641FX	Sterilization Tray with Removable Lid, Stainless Steel, 480 x 250 x 60 mm with Silicone Mat

Micro Laryngoscopy Set

Ref. #	Description
530201FX	Operating Laryngoscope Dilating, Length 18 cm, Large for Adults
530203FX	Operating Laryngoscope Dilating, Length 18 cm, Small for Different Anatomy Circumstances
530206FX	Operating Laryngoscope Dilating, Length 15 cm, For Children
530110FX	Fiber Optic Light Carrier For Laryngoscope 530101FX - 530105FX
530111FX	Fiber Optic Light Carrier For Laryngoscope 530106FX - 530107FX
530210FX	Suction Tube for Use with Laryngoscopes 530101FX - 530105FX
530211FX	Suction Tube for Use with Laryngoscopes 530106FX - 530107FX
530500FX	Chest Support for Adults, Ring Ø 9.5 cm, Rod Length 34 cm
532303FX	Larynx Forceps with Round Cupped Jaws, 360° Rotatable, Ø 2 mm, Double Action
532306FX	Larynx Grasping Forceps Serrated, 360° Rotatable, Double Action Jaws, Curved
532168FX	Vocal Holding Forceps by Arnold with Triangular Jaws, for Right Side, WL 23 cm
532169FX	Vocal Holding Forceps by Arnold with Triangular Jaws, for Left Side, WL 23 cm
532108FX	Laryngeal Scissors, Straight, WL 23 cm
532137FX	Needle Holder, Delicate, Round Jaws with Teeth, Ø 1.6 mm, Upcurved, Self-Retaining
532138FX	Atraumatic Vocal Cord Retractor, Self Retaining, with Ratchet, WL 23 cm
532216FX	Larynx Sickle Knife, Sharp, Curved, WL 23 cm
532124FX	Larynx Hook with Probe End, 90° Angled, WL 23 cm
532126FX	Suction Tube, Ø 2.0 mm, WL 25 cm
532128FX	Suction Tube, Ø 3.0 mm, WL 25 cm
532228FX	Cotton Carrier, Twisted End, Serrated, Ø 2.5 cm, Length 28 cm
187903FX	Instrument Tray with Lid, Stainless Steel, 500 x 270 x 70 mm
186300FX	Magnetic Instrument Rack, Large Size 480 x 240 x 40 mm with 3 Magnetic Strips for Holding Instruments

Product Information & Trade Policy



Product Information

Biomaterial Selection

All biomaterials selected by Grace Medical, Inc. meet or exceed ASTM and international standards for implant grade materials. Current implant material choices include:

Hydroxylapatite - This biomaterial is among the most biocompatible materials available for use. Its structure is essentially calcium and phosphorous resembling the chemical composition of bone. Implant materials used by Grace Medical, Inc. are dense hydroxylapatite with minimum porosity.

Otosil - Otosil is a combination of silicone and barium sulfate. The barium sulfate adds rigidity to the silicone while still providing elastic properties. Because barium sulfate is a radio-contrast agent, it is helpful for determining the position of the implant by x-ray. OtoSil shafts can be trimmed using a scalpel.

Nitinol - As Heat-Activated Shape Memory - Nitinol is typically composed of approximately 50% to 55.6% nickel by weight in proportion to the titanium content. Nitinol is a non-ferromagnetic material with a lower magnetic susceptibility than stainless steel. When heat is applied to the Nitinol wire causing it to reach its transition temperature, it remembers and returns to its formed shape.

As Superelastic Shape Memory - Same material only treated differently. There is no transition temperature using superelastic nitinol. The wire is formulated to gain a spring-like character. Superelastic nitinol exerts forces to remain closed.

PTFE (polytetrafluoroethylene) - Frequently referred to as TEFLON® or fluoroplastic (FLPL) - this highly inert material is widely used for implant applications. Its properties are well suited for tympanostomy tubes due to its “slick” characteristics that may help limit clogging of tube lumens.

*Teflon is a registered trademark of the E.I. DuPont de Nemours and Co., Wilmington, D.E.

Silicone - This time proven biomaterial has excellent properties for ventilation tubes and middle ear implant application. Tubes can be “squeezed” with forceps allowing for compact insertion of the tube yet retaining its original preformed shape once securely in place. Firm durometer (hardness) silicone is used for implant shaft materials due to its stiffness and inert properties.

Phosphorylcholine - PC is a totally synthetic, stable polymer coating that develops a covalent molecular water layer on the material surface. These molecules bind themselves tightly, making it difficult for proteins and cells to displace the water and attach to the surface of the ventilation tube. PC coating applied to silicone ventilation tubes helps to enhance resistance to bacterial infection.

Titanium - ASTM F67 Grade 2 Titanium is a lightweight, highly biocompatible material that has found increasing application replacing stainless steel. It is very lightweight and non-reactive to MRI.

Polyethylene - Polyethylene, which is composed of only carbon and hydrogen atoms, is a popular implant material used in a variety of microsurgery applications. Bioinertness and the ability to have smooth surfaces are but a few of the qualities that make polyethylene appropriate for ventilation tubes.

Customer Orders

Orders may be placed by contacting Grace Medical, Inc. 8500 Wolf Lake Drive, Suite 110, Memphis, TN 38133, toll free for US customers 1.866.GRACEMED (1.866.472.2363); international customers should call USA 901.386.0990, fax 901.386.0950, email info@gracemedical.com

When ordering, please specify:

- Customer account number
- Purchase order number
- Shipping and billing address
- Quantity required
- Catalog reference number
- Special handling or shipping instructions

Please note that minimum order quantities may apply. Ventilation tubes are packaged in boxes of five, ten, thirty and sixty sterile packages per box. Ten and Sixty packs have two tubes per package.

Product Report

Please report any comments or complaints to Grace Medical, Inc. including user name, address, phone, product reference number, product lot number, date and description of the event. Incidents related to Grace Medical, Inc. products which involve potential serious injury must be reported immediately to Grace Medical, Inc.

Terms, Payments & Notice

Quotes & payments are made in US dollars. Grace Medical, Inc. reserves the right to discontinue products or to change specifications, designs, pricing, or terms and conditions of sale without prior notice or obligation. Applicable Federal, State, or other sales or use taxes will be added unless exemption certificate is supplied by the purchaser.

Payment terms are net 30 days, F.O.B. Memphis, TN USA. Check remittances should be forwarded to: Grace Medical, Inc., PO Box 34877, Memphis, TN 38134. If remitting by wire, please contact the accounting department for instructions at 901.386.0990.

The prices and warranties quoted herein apply only to products bought for the purchaser's own use. If product is not devoted to purchaser's own use and is resold, all warranties are immediately null and void.

Acceptance of Grace Medical, Inc.'s offer to sell the products listed herein is expressly limited to the terms set out herein and all sales of product are conditioned upon the acceptance of, and are subject to, the terms set out herein. All orders for product shall be deemed to incorporate and accept these terms by reference and any deviation from said terms shall be ineffective and void.

Returned Material Policy

Grace Medical, Inc. will accept items for return within 60 days of the original shipment date. To request a return authorization, please have the following information available:

- Item number to be returned and quantity for return
- Lot number and/or invoice from original shipment
- Date of original shipment
- Reason for product return

Returned products will be credited if received in their original packages with unbroken security seals. No credit will be issued for product received damaged, with outdated sterility dates, broken lots of product, obsolete products, or custom products manufactured to customer's specifications.

Returned material must be forwarded transportation charges prepaid accompanied by the appropriate returned material authorization form (RMA).

Credit will be issued as follows:

- Less than 30 days, 100% credit of invoice price
- 30-60 days, 80% credit of invoice price
- over 60 days, non-refundable

Product Availability

Grace Medical, Inc. shall not be liable for any delay or failure to deliver product or otherwise perform, where such failure or delay has been occasioned by matters such as fire, flood, embargo, strike, lockout, act of God, shortage of raw material or power, governmental action or compliance with governmental requirements, whether voluntary or pursuant to order, or any other circumstance beyond Grace Medical, Inc.'s control.

Delivery dates are based on production estimates and Grace Medical, Inc.'s best effort to ship on schedule. The right is reserved to fill orders by complete or partial shipments unless otherwise agreed. The responsibility of goods lost, damaged or delayed in transit rest with the carrier.

Limited Warranty

Grace Medical, Inc. warrant implant products to the original purchaser that all products shall be free from defects in material and workmanship as long as the integrity of the package has not been compromised. For instrument or equipment items, products are warranted for a period of 1 year from the date of delivery.

Grace Medical, Inc.'s liability from the manufacture and sale of product is expressly limited to the amount of the purchase price of the product and Grace Medical, Inc. shall in no event be liable for consequential, special or incidental damages. Grace Medical, Inc.'s warranties are exclusively limited to the preceding express warranty and all other warranties of any kind or description whatsoever, express or implied, including warranties of merchantability or fitness for a particular purpose are hereby disclaimed. No person has authority to vary or modify this warranty or to bind Grace Medical, Inc. to any other terms whatsoever.

ENT. Redefined.

Grace Medical, Inc.
8500 Wolf Lake Drive, Suite 110
Memphis, TN 38133 USA
Phone 1.901.386.0990
Fax 1.901.386.0950
Toll Free 1.866.472.2363
info@gracemedical.com
www.gracemedical.com

©2014 Grace Medical, Inc.
All Rights Reserved